

PEES Power Systems

Zhubianan PV inverter location



Overview

The inverter is typically installed on the south-facing wall, with its panels directed to the north to reduce direct sunlight exposure. Many users assume that placing a solar inverter anywhere outdoors is fine, but from my testing, location truly matters. I've set up several units in different spots and found that airflow, shading, and proximity to panels significantly impact performance and durability. The SUMRY 3600W Solar. Another common installation method is mounting the inverter on the wall. Learn how to avoid temperature and humidity-related issues and ensure your system runs smoothly. Any systems above 4kw will require a bespoke schematic and cable specification Further detail drawings for these. The placement should always be done by a professional installer specialized in PV.

Zhubianan PV inverter location



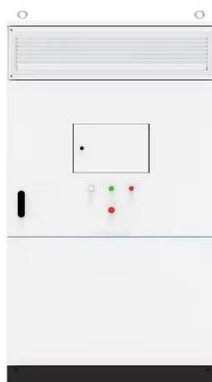
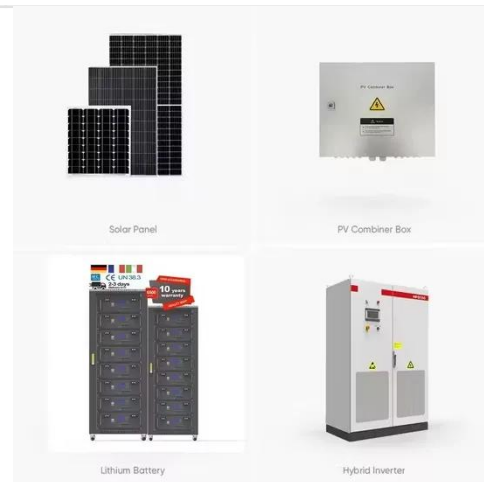
- ✓ IP65/IP55 OUTDOOR CABINET
- ✓ OUTDOOR CABINET WITH AIR CONDITIONER
- ✓ OUTDOOR ENERGY STORAGE CABINET
- ✓ 19 INCH

Best Location For Solar Inverter [Updated: February 2026]

The inverter should be installed in a shaded location, such as a room with no windows or shaded from the sun during peak daylight hours. An example is placing it in a basement or interior ...

Optimal Inverter Placement in Residential Settings

Need help with where to install your solar inverter in your home? This guide explores optimal solar inverter location in residential settings, addressing common concerns like "where to place the ...



Best Location for Installing Photovoltaic Inverters

When selecting an installation location for the inverter, avoid placing it in direct sunlight to prevent overheating. The location should be solid enough to support the inverter's weight and ...

What is The Best Spot to Place an Inverter in a PV Plant?

To avoid users of a building to be bothered by an inverter, it is advisable to hang the device on a spot where it doesn't cause nuisance; e.g. a garage, a shed, a basement or an outdoor wall.



Where to Place Solar Inverter?

Wondering where to place your solar inverter? This guide covers the best locations for solar inverter installation, tips on optimizing performance, and considerations for your home or ...

Solar Inverter Installation: Best Practices and Common Mistakes

The ideal location for your solar inverter is a shaded, well-ventilated, and easily accessible spot. Heat is the enemy of efficiency, so whether installed indoors or outdoors, the inverter must ...



Eco2Solar PV Site Guide

A 6mm² Twin & Earth 6242Y cable running from the consumer unit to the inverter location for PV systems up to

3.6kW. Any systems above 4kw will require a bespoke schematic and cable

...



Optimal Placement of Solar Inverters and UPS Systems: Practical Guide

Discover the best locations to install your solar inverters, UPS systems, and batteries for optimal performance and reliability. Learn how to avoid temperature and humidity-related issues and ...



PV Inverter location

Will run DC for what looks like about 52m from PV DC isolator to the inverter. Ploughs etc have no access as the PV will be located on a very steep hill, with trees to the rear.



Where Does a Solar PV Inverter be Installed? , inverter

The solar PV inverter should be installed on the south wall as much as possible. The panel of the PV inverter should face the north to avoid sun basking. The detailed installation requirements ...



Contact Us

For catalog requests, pricing, or partnerships, please visit:
<https://www.peregrine-energy.co.za>

