

PEES Power Systems

Wind turbine capacity on land



IP65/IP55 OUTDOOR CABINET

ALUMINUM

OUTDOOR ENERGY STORAGE CABINET

OUTDOOR MODULE CABINET



Overview

A wind farm can typically occupy between 2 to 40 acres per megawatt of capacity, depending on various factors. 2 MW turbine, the effective land use within a farm might range from 40 to 70 acres. Average turbine hub height, rotor diameter, and nameplate capacity for land-based wind projects from the Land-Based Wind Market Report: 2024 Edition. In practice, the cost of land and associated infrastructure may force companies to space turbines closer together. Correction: We previously reported that one acre can hold between 40 and 80 wind. 2024 ATB data for land-based wind are shown above. The predicted future technology pathways are based on a series of innovations to overcome transportation challenges. A single wind turbine has a relatively small physical footprint, typically requiring less than an acre for its foundation and an immediate access pad. 1 feet) away from any nearby obstruction, and at a height such that the bottom of the rotor blades will be 9 meters (29.

Wind turbine capacity on land



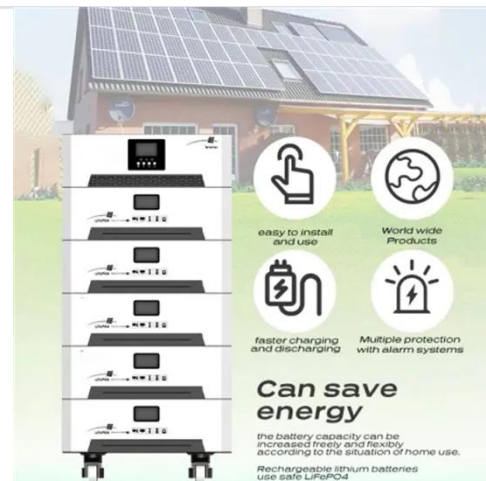
How Much Land Does 1 Wind Turbine Need: Exploring Space

...

Learn how much land 1 wind turbine needs for optimal use. The spatial planning for wind energy projects involves a careful consideration of various factors that influence land usage. These ...

7 Factors That Decide How Many Wind Turbines Fit on Your Land

Learn how land size, spacing, zoning, and wind conditions determine the number of wind turbines you can install. Plan efficiently for maximum output.



How Much Land Is Needed For Wind Turbines?

In the United States, the direct land use for wind turbines comes in at three-quarters of an acre per megawatt of rated capacity. That is, a 2-megawatt wind turbine would require 1.5 acres ...

How Much Us Land Are Taken By Wind Turbine Feilds

One wind turbine can require up to 80 acres of land, and each turbine will generate around 2.5 MW. Because wind turbines are spaced so far apart, the transition to wind or solar power ...



How Many Acres Do You Need Per Wind Turbine?

Wind energy is a significant renewable power source. This article clarifies the land requirements for wind turbines, detailing both the minimal physical footprint of individual turbines and ...

Land-Based Wind , Electricity , 2024 , ATB , NLR

We selected these four wind turbine technologies in consultation with industry to represent the range of technology we expect to be available in 2030, including a higher-specific-power machine that would ...



Wind Turbines: the Bigger, the Better

Average turbine hub height, rotor diameter, and nameplate capacity for

land-based wind projects from the Land-Based Wind Market Report: 2024 Edition. A wind turbine's hub height is the ...



Property Values and Land-based Utility-Scale Wind Turbines

Wind energy projects across the U.S. deliver an estimated \$1.9 billion in state and local tax payments and land-lease payments each year. Additionally, as of the second quarter of 2022, the industry ...



How Many Wind Turbines Can Fit On One Acre?

One wind turbine needs several acres of land, with a 2.2 MW turbine ideally requiring between 40 and 70 acres. In practice, financial constraints may force companies to place wind ...



Contact Us

For catalog requests, pricing, or partnerships, please visit:
<https://www.peregrine-energy.co.za>

