

## PEES Power Systems

# Wind power used in communication base stations

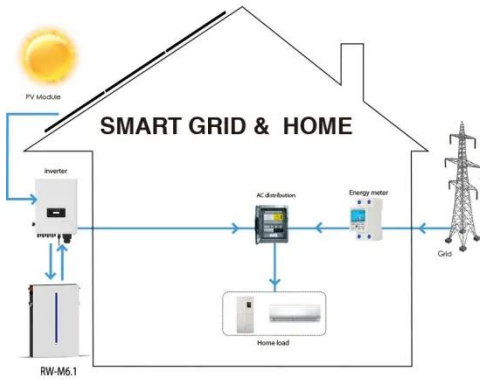


## Overview

---

Hybrid energy solutions enable telecom base stations to run primarily on renewable energy sources, like solar and wind, with the diesel generator as a last resort. This reduces emissions, aligns with sustainability goals, and even opens up opportunities for carbon credits or. 5G base stations (BSs), which are the essential parts of the 5G network, are important user-side flexible resources in demand response (DR) for electric power system. Improved Model of Base Station Power System for the. An individual base station with wind/photovoltaic (PV)/storage system exhibits limited scalability, resulting in poor economy and reliability. If all of the channel capacity of a BS is occupied, a user cannot access this BS and must instead access another BS that is farther away.

## Wind power used in communication base stations

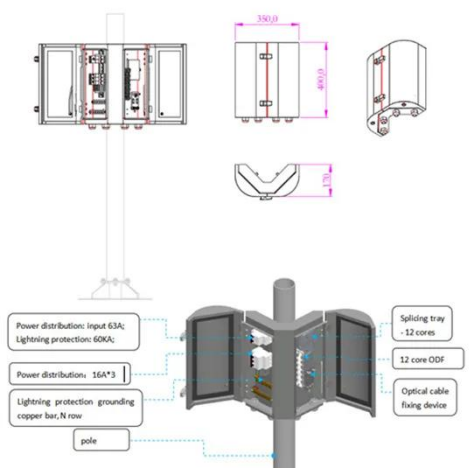


### Wind power migration of communication base stations

In this paper, a distributed collaborative optimization approach is proposed for power distribution and communication networks with 5G base stations. Firstly, the model of 5G base stations considering ...

### The connection between communication base station and wind ...

Hybrid energy solutions enable telecom base stations to run primarily on renewable energy sources, like solar and wind, with the diesel generator as a last resort. This reduces emissions, aligns with ...



### Research on Capacity Optimization Configuration of Wind/PV

An individual base station with wind/photovoltaic (PV)/storage system exhibits limited scalability, resulting in poor economy and reliability. To address this, a collaborative power supply ...

## Why are wind turbines used for communication base stations built ...

This article explores how small wind turbines for remote telecom towers are revolutionizing energy solutions, highlighting their benefits and practical applications.



## How to build wind power stations for communication base stations

The presentation will give attention to the requirements on using windenergy as an energy source for powering mobile phone base stations. How do wind power stations work? Wind power stations use ...

## Communication base station wind power access network

Figure 1 illustrates the equipment composition of a typical 5G communication base station, which mainly consists of 2 aspects: a communication unit and a power supply unit.



## Near and far points of wind



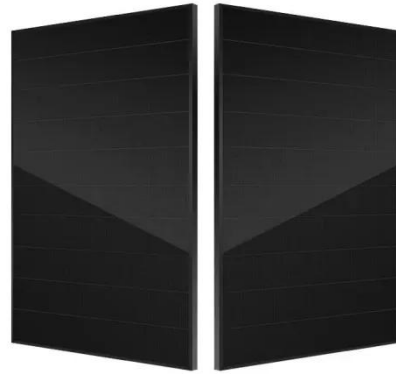
## power for communication base stations

We investigate the use of wind turbine-mounted base stations (WTBSs) as a cost-effective solution for regions with high wind energy potential, since it could replace or even outperform

---

## How to make wind solar hybrid systems for telecom stations?

Then, the application of wind solar hybrid systems to generate electricity at communication base stations can effectively improve the comprehensive utilization of wind and solar energy.



## Wind power construction of communication base stations

We investigate the use of wind turbine-mounted base stations (WTBSs) as a cost-effective solution for regions with high wind energy potential, since it could replace or even outperform

---

## New base station for wind power communication

Our study introduces a communications and power coordination planning (CPCP)

model that encompasses both distributed energy resources and base stations to improve communication quality ...



## Contact Us

---

For catalog requests, pricing, or partnerships, please visit:  
<https://www.peregrine-energy.co.za>

