

PEES Power Systems

Will photovoltaic panels accumulate soil when it snows

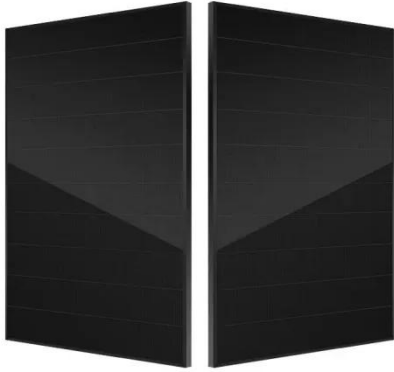


Overview

While snow itself isn't inherently harmful to solar panels, the way it accumulates and interacts with the panels can create issues. While these systems operate more efficiently in the cold, the presence of snow and ice introduces a physical barrier that prevents light from reaching the silicon cells. For. Clearing snow buildup from your PV panels is critical to getting the most from your solar power system. Since a PV system's performance is directly tied to how much sunlight can be transformed into electric energy, snow loss is a large aspect of. However, a common concern arises during winter months: Will solar panels still generate electricity when covered in snow?

This question is crucial for anyone considering solar energy in regions that experience heavy snowfall. Understanding how snow affects solar panel performance can help potential. Because heat can actually cause the photovoltaic cells that make up the panels to perform suboptimally, colder temperatures (especially colder temperatures without snowfall) are ideal for solar panel function.

Will photovoltaic panels accumulate soil when it snows



How Snow Buildup Affects Solar Panels and Ways to Prevent Damage

One of the most common concerns, especially in regions that experience harsh winters, is the potential for snow on solar panels. In this guide, we'll explore the potential risks and steps you can take to ...

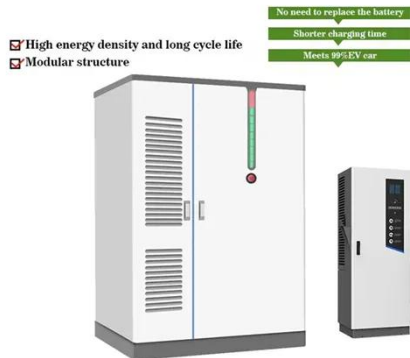
Snow impact on PV performance: Assessing the zero

However, in cold climates with heavy snowfall, PV systems performance might be significantly reduced. This review investigates the impact of snow on solar PV in regions with harsh winters. It describes ...



Do solar panels work with snow on them

When winter storms roll in, snow accumulation on solar panels is inevitable.



Will Solar Panels Work with Snow on Them? Facts & Myths

Understanding how snow impacts solar panel performance is essential for homeowners and businesses in snowy regions. While snow can temporarily hinder energy production, various ...



Snow on Solar Panels: What You Need To Do - Forbes Home

In most cases, you shouldn't need to clean snow off your solar panels. Light can get through the panels when there's a light dusting of snow, and when the snow is heavier, the 45-degree

Understanding PV System Losses, Part 3: Soiling, Snow, System

In snowy climates, the amount of snow

loss will be dependent on several factors, including the tilt of the panels, duration and intensity of snowfall, ambient temperature, and possibly wind.



Understanding The Risks of Snow on Solar Panels

When snow accumulates on a smooth solar panel surface, it can eventually slide off in large sheets. This phenomenon, known as a "roof avalanche," can pose serious risks to property, ...

What Happens When Snow Covers Solar Panels?

However, even a small amount of snow covering a portion of a panel can create a disproportionately large reduction in power output. This drastic power drop is due to the "shading effect" ...



Understanding PV System Losses, Part 3: Soiling, Snow, System



Understanding how snow impacts solar panel performance is essential for homeowners and businesses in snowy regions. While snow can temporarily hinder energy production, various factors can ...

How Does Snow Affect Solar Panels? Facts & Smart Solutions

When snow blankets your solar panels, sunlight can't penetrate through it, preventing photovoltaic cells from producing power. Whether the snow on solar panels is dense or light, it can diffuse and scatter ...



How Does Snow Affect Solar Panels and What Can You Do About it?

You should install solar panels at an angle so that the snow can slide off the surfaces rather than accumulate on the panel. Also, conduct regular maintenance to check the panels for cracks.

Contact Us

For catalog requests, pricing, or partnerships, please visit:
<https://www.peregrine-energy.co.za>

