

PEES Power Systems

What is the temperature of solar container lithium battery energy storage



What is the temperature of solar container lithium battery energy s



How Temperature Impacts Your Lithium Ion Solar Battery's Lifespan

A lithium-ion solar battery is a significant component of any home energy storage system. While factors like depth of discharge and cycle count are widely discussed, temperature remains a ...

CONTAINER ENERGY STORAGE BATTERY TEMPERATURE

Equipped with integrated solar panels, LiFePO4 batteries, and a high-efficiency refrigeration system, it provides stable, low-temperature storage for agriculture, food distribution, logistics, and ...



Container energy storage battery temperature requirements

This document e-book aims to give an overview of the full process to specify, select, manufacture, test, ship and install a Battery Energy Storage System (BESS).

Optimal storage temperature and humidity for lithium batteries

Prolonged exposure to 40°C/104°F risks thermal runaway--a dangerous overheating chain reaction. Cold slows lithium ion movement, reducing charging efficiency. Repeatedly charging cold batteries ...



Why Temperature Matters for Solar Battery Performance and Lifespan

In this blog, we'll explain what temperature limits really mean, how Australian weather plays a role, and what homeowners and installers should consider when choosing or installing a ...

The Silent Killer Of Energy Storage Systems: Temperature Effects No ...

Solar batteries, particularly lithium-ion and lithium iron phosphate (LFP), are highly sensitive to environmental conditions. Laboratory-tested capacity ratings often assume operation in a ...



What's the Optimal Lithium Battery Storage Temperature?

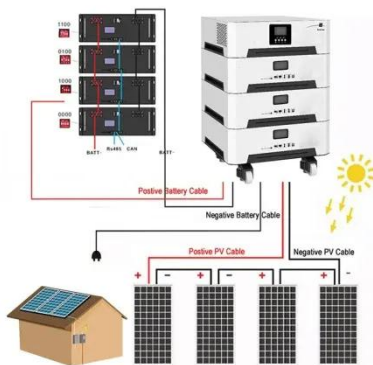


Balancing

Storage Temperature: For long-term storage, the ideal lithium ion battery storage temperature is 10°C to 25°C (50°F to 77°F). Temperatures above 30°C (86°F) increase self-discharge and capacity loss, ...

Temperature Sensitivity in Energy Storage and Battery Installation ...

The optimal temperature range for most battery types, including lithium-ion, is between 20°C and 25°C (68°F to 77°F). This range ensures consistent performance, enhancing reliability and ...



All-climate battery energy storage

Electrochemical energy-storage cells that function with invariable performance and reliability over a wide temperature range, e.g., from -50 o C to 60 o C, are called all-climate batteries ...

Solar Battery Temp Effects on Container Battery

Solar batteries in containers can face

very hot or cold weather. High heat can make lithium-ion batteries lose power and get old fast. Cold weather can cut lead-acid battery power in ...



Contact Us

For catalog requests, pricing, or partnerships, please visit:
<https://www.peregrine-energy.co.za>

