

## PEES Power Systems

# What is the distance between the photovoltaic panel rails



 **TAX FREE**    

## ENERGY STORAGE SYSTEM

**Product Model**  
HJ-ESS-215A(100KW/215KWh)  
HJ-ESS-115A(50KW 115KWh)

**Dimensions**  
1600\*1280\*2200mm  
1600\*1200\*2000mm

**Rated Battery Capacity**  
215KWH/115KWH

**Battery Cooling Method**  
Air Cooled/Liquid Cooled



## What is the distance between the photovoltaic panel rails

---



### The distance from the photovoltaic panel to the rail

What is Solar Panel Mounting and Racking? Mounting solar panels refers to the process of installing solar energy systems onto a structure such as a building or ground

## Roof Top Rail System

In this video, he says you have to measure a distance between the holes in the solar panel, and use that distance in order to space apart the rails on the roof.



### What Is the Typical Distance Between Solar Panels and a Roof?

The typical distance between the bottom edge or frame of a solar panel and the roof surface falls within a narrow and consistent range across the residential solar industry. For most sloped-roof ...

## How to Calculate the Minimum Distance Between PV Panels?

Understand the importance of minimum installation distance for solar panels, calculation methods, and relevant regulations to ensure efficient operation and compliance of solar energy ...



## Photovoltaic panel rail distance

What is the difference between railed and shared rail solar panels? s the same as the railed system. The difference lies in the number of rails needed to be installed. While railed systems for two solar panels ...

## Optimal Spacing Guidelines for Solar Roof Mounts

How Far Apart Should Solar Panel Brackets Be? Typically, the spacing between solar roof mounts ranges from 4 to 8 feet, with most installations being about 6 feet apart.



## How far apart should solar panel rails be?

Standard Installations: For most residential solar panel installations,

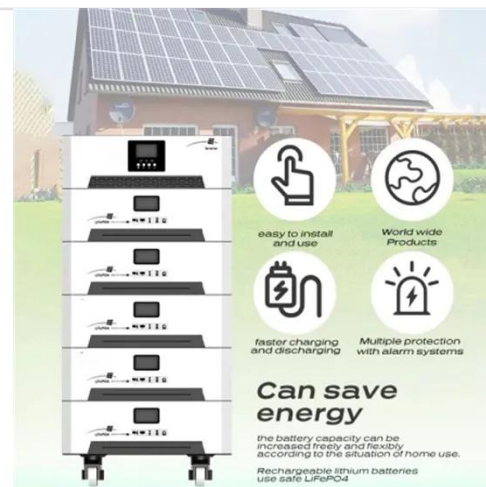
ESS



spacing the rails about 4 feet apart is common, providing adequate support while allowing for efficient energy capture.

## How Much Space Should be between Solar Panels?

Solar panel rails should have 12 to 16 inches of space between the first support and the end of the rail. Too much space between the rails and the panels could bounce, dangerous during a heavy storm or ...



## What is the appropriate distance between the photovoltaic panel ...

Each solar panel must be fastened to two rails, and the rails must be long enough to accommodate all panels. In other words, the rails must be at least 160 inches long.

## What is the distance between solar rails-xmkseng

Residential Installations: For residential solar panel systems, pv rails are typically spaced 3 to 4 feet apart, depending on the panel size and mounting system.



---

## Contact Us

---

For catalog requests, pricing, or partnerships, please visit:  
<https://www.peregrine-energy.co.za>

