

PEES Power Systems

What happens if photovoltaic panels are connected in parallel



Overview

To wire solar panels in parallel, connect each panel's positive terminals together. Parallel wiring results in amperage accumulating and voltage remaining the same. Connecting more than one solar panel in series, in parallel or in a mixed-mode is an effective and easy way not only to build a cost-effective solar panel system but also helps us add more solar panels in the future to meet our increasing daily needs for electricity. This is often used in 12V systems with multiple panels as wiring. When solar panels are connected in parallel, the overall voltage output of the system remains equal to that of a single panel. However, the total output current increases as the sum of the current generated by each individual panel. A String of PV Modules When N-number of PV modules are connected in series. You can do that one of two ways (or a hybrid of both).

What happens if photovoltaic panels are connected in parallel



How To Wire Solar Panels In Series Vs. Parallel

When multiple panels are wired in parallel, it is called a PV output circuit. Wiring solar panels in parallel causes the amperage to increase, but the voltage remains the same.

Series, Parallel & Series-Parallel Connection of PV Panels

Sometimes to increase the power of the solar PV system, instead of increasing the voltage by connecting modules in series the current is increased by connecting modules in parallel.



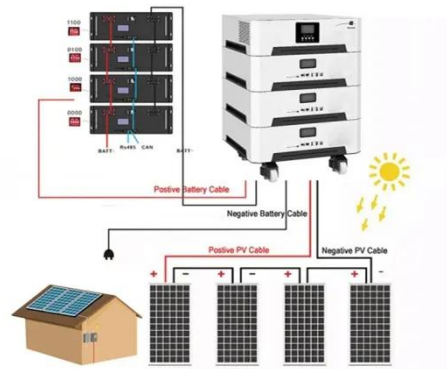
How to connect solar panels together: Series, parallel, combo

Parallel connections is optimal for smaller setups like RV and boat systems, offering excellent shade tolerance since panels operate independently, though they require thicker wires and ...

How to Properly Connect Solar Panels in Parallel: A Complete

...

When solar panels are connected in parallel, the positive terminals are connected together and the negative terminals are also connected together. This allows the current generated by each solar ...



Series vs. Parallel , Renogy US

Strictly parallel connections are mostly utilized in smaller, more basic systems, and usually with PWM Controllers, although they are exceptions. Connecting your panels in parallel will increase the amps ...

How to Connect Solar Panels in Parallel

This setup is common in 12V or 24V systems where you want to safely charge batteries or run low-voltage inverters. In this guide, we'll walk you through how to connect solar panels in ...

...



What is Parallel Connection in Solar Panels?

When solar panels are connected in



parallel, the overall voltage output of the system remains equal to that of a single panel. However, the total output current increases as the sum of the ...

What is Parallel Connection in Solar? The Quick Guide

Parallel connection in solar keeps your system running even if one panel slacks off. It's a smart setup if you want steady power without stressing over shade or mismatched panels.



Connecting Solar Panels in Series or in Parallel?

If you connect two identical solar panels together in series or parallel under laboratory conditions, the electricity output using either method will be virtually identical.

Mixing solar panels - Dos and Don'ts

When you connect solar panels in parallel, the total output voltage of the solar array is the same as the voltage of

a single panel, while the total output current is a sum of the currents passing through each ...



Contact Us

For catalog requests, pricing, or partnerships, please visit:
<https://www.peregrine-energy.co.za>

