

PEES Power Systems

What generation is the 530W photovoltaic panel



Overview

With a module efficiency of 22.3%, the SIL-530 XM utilizes next-generation N-type solar cells to enhance energy production and reduce degradation over time. 530W panels deliver optimal power density: With efficiency ratings of 20-22%, these panels generate nearly double the power of traditional 300W modules while fitting standard residential roof layouts, making them ideal for space-constrained installations in 2025. Advanced half-cell technology.

Example: 5kW solar system is comprised of 50 100-watt solar panels. Alright, your roof square footage is 1000 sq ft. Can you put a 5kW solar system on your roof?

For that, you will need to know what size is a typical 100-watt solar panel, right?

To bridge that gap of very useful knowledge needed. Let's explore the key specifications and features that make Jinko's 530W solar panels a desirable choice for harnessing the power of the sun. 52%, and the double-sided design utilizes the sunlight reflected from the back, offering a power increase of up to 30% on the same surface area. Ideal for residential, C&I rooftops, and utility-scale PV projects.

What generation is the 530W photovoltaic panel



Silfab SIL-530 XM Bifacial , 530W Commercial Panel

Its 530W output and N-type cell technology provide reliable performance across various conditions. The bifacial design can be particularly advantageous in environments with high albedo or when used in ...

Beny New Energy , BENY-530W , Solar Panel ...

Increase your solar power generation with our 530W solar modules. These ...



Topsun 530W Solar Panel Specifications

The 530W solar panels have a rated output of 530 Wp and an impressive efficiency of 20.44 %, making them an excellent choice for homeowners looking to harness the power of the sun and reduce their ...

530 Watt Solar Panel: Complete 2025 Buyer's Guide & Performance ...

Comprehensive guide to 530W solar panels. Compare top models from JA Solar, Jinko, Canadian Solar & more. Includes performance data, pricing, and installation tips.



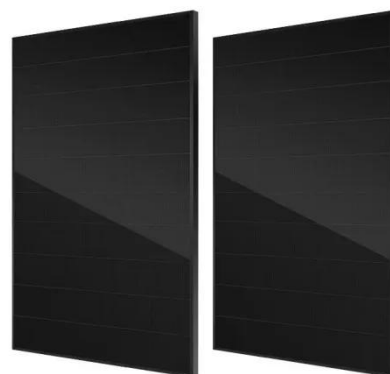
- IP65/IP55 OUTDOOR CABINET
- IP54/55
- OUTDOOR ENERGY STORAGE CABINET
- OUTDOOR BATTERY CABINET

Beny New Energy , BENY-530W , Solar Panel Datasheet , ENF Panel ...

Increase your solar power generation with our 530W solar modules. These modules have an efficiency of up to 20.52%, and the double-sided design utilizes the sunlight reflected from the back, offering a ...

Mustang 530W-555W Monocrystalline Solar Panel

Mustang's HY-M10/144H solar module delivers 530W to 555W power output with advanced 10BB monocrystalline technology, durable dual-glass build, and a 21.5% peak efficiency.



Jinko 530w Datasheet

One of the key features of the Jinko 530w solar panel is its exceptional power



output, which is achieved through advanced engineering and optimized design. The high wattage rating ensures maximum ...

Standard Solar Panel Sizes And Wattages (100W-500W Dimensions)

The goal here is to get to the average solar panel size by wattage. You can find typical dimensions of 100W, 150W, 170W, 200W, 200W, 220W, 300W, 350W, 400W, and 500W solar panels summarized ...



530W Solar Panel N-Type TOPCon Bifacial Dual Glass 23.85

The UE530 T-54HBD is a next-generation 530W solar module utilizing N-type TOPCon bifacial cells and dual-glass encapsulation, delivering superior efficiency and long-term reliability.

SIL-530 XM BIFACIAL

Silfab Commercial NTC Bifacial utilizes next-generation N-type solar cells, contributing to significantly higher efficiency levels and longevity while maximizing energy production and reducing degradation ...



Contact Us

For catalog requests, pricing, or partnerships, please visit:
<https://www.peregrine-energy.co.za>

