

PEES Power Systems

Three-phase current-type bridge inverter



Three-phase current-type bridge inverter

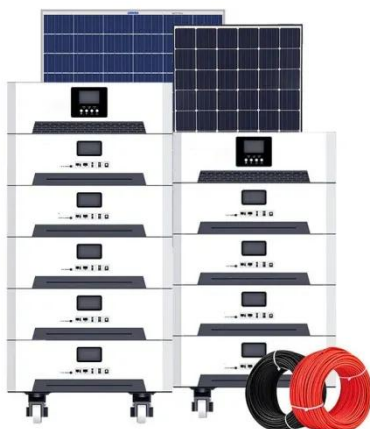


Lecture 23: Three-Phase Inverters

In particular, considering "full-bridge" structures, half of the devices become redundant, and we can realize a 3-phase bridge inverter using only six switches (three half-bridge legs). The 3-phase bridge ...

Microsoft PowerPoint

Fall 2005 13.2 Fully Controlled 3-Phase Bridge Converter One Phase Leg Phase Leg Equivalent Circuits



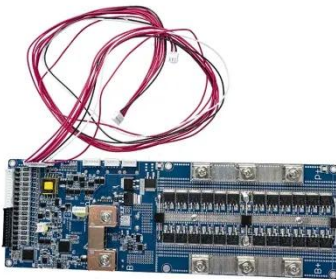
Three-phase inverter reference design for 200-480VAC drives

...

This reference design uses a converter inverter brake (CIB) IGBT module to implement the three phase inverter. A CIB IGBT module has a diode based three phase rectifier front end, IGBT based three ...

Three-Phase Inverters

We will go through numerous three-phase inverter types, their essential parts, and circuit topologies in the following sections. Commonly the full-bridge topology is used for three-phase inverters.



Three Phase Bridge Inverter , Working Principle:

The phase sequence can be reversed by simply reversing the sequence of firing the thyristors. The line-to-line voltages are found by taking the difference of phase voltages.

Three Phase Bridge Inverter Explained

A three phase bridge inverter is a device which converts DC power input into three phase AC output. Like single phase inverter, it draws DC supply from a battery or more commonly from a ...



Three Phase Inverter , DC-TO-AC INVERTER

The input ac is first converted into dc and then converted back to ac of new frequency. The square wave inverter

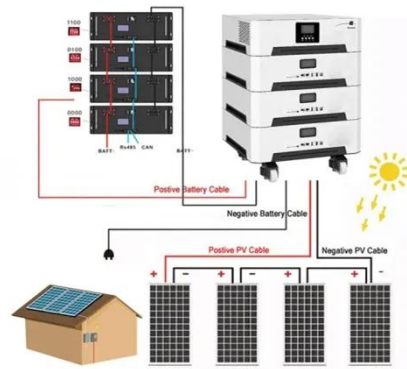
- LiFePO₄
- Wide temp: -20°C to 55°C
- Easy to expand
- Floor mount&wall mount
- Intelligent BMS
- Cycle Life:≥6000
- Warranty :10 years



discussed in this lesson may be used for dc to ac conversion. Such a circuit may, for ...

Three Phase Bridge Inverter Explained

Cascaded Multilevel Inverter is a 3-phase inverter designed for electric utility applications, offering precise control by employing multiple voltage levels to create a stepped ...



Three Phase Bridge Inverter

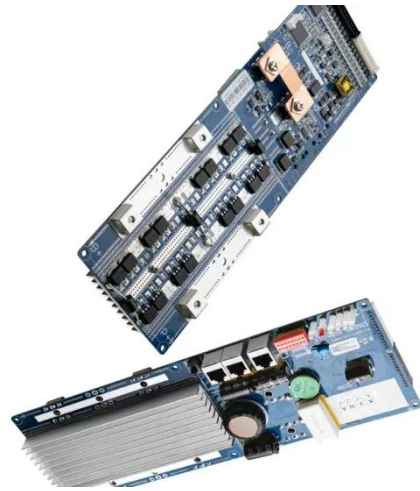
A three-phase bridge inverter is a type of power electronic device used to convert DC power into three-phase AC power. It consists of six power electronic switches arranged in a bridge configuration to ...



3-Phase Inverter

Cascaded Multilevel Inverter is a 3-phase inverter designed for electric utility applications, offering precise control by employing multiple voltage levels to

create a stepped ...



Contact Us

For catalog requests, pricing, or partnerships, please visit:
<https://www.peregrine-energy.co.za>

