

PEES Power Systems

The wind blades are used to generate electricity



Overview

Wind turbines work on a simple principle: instead of using electricity to make wind—like a fan—wind turbines use wind to make electricity. Wind turns the propeller-like blades of a turbine around a rotor, which spins a generator, which creates electricity. As renewable energy technology continues to advance and grow in popularity, wind farms like this one have become an increasingly common sight along hills. To truly understand how wind turbines generate power—from the movement of their blades to the delivery of electricity into the grid—it is essential to explore every stage of the process, from aerodynamics to electrical conversion, and from environmental interaction to global energy integration. They can be stand-alone, supplying just one or a very small number of homes or businesses, or they can be clustered to form part of a wind farm. Here we explain how they work and why they are.

The wind blades are used to generate electricity



How Wind Turbines Generate Power -- From Blade to Grid

The rotor blades of a wind turbine are the first point of contact with the wind, and their design is crucial for efficient energy capture. They are not shaped like flat paddles but rather like airplane wings, using ...

How a Wind Turbine Works

A wind turbine turns wind energy into electricity using the aerodynamic force from the rotor blades, which work like an airplane wing or helicopter rotor blade.



INTEGRATED DESIGN

EASY TO TRANSPORT AND INSTALL,
FLEXIBLE DEPLOYMENT



How Do Wind Turbines Work?

Wind turbines work on a simple principle: instead of using electricity to make wind--like a fan--wind turbines use wind to make electricity. Wind turns the propeller-like blades of a turbine around a rotor, ...

Electricity generation from

wind

Wind flows over the blades creating lift (similar to the effect on airplane wings), which causes the blades to turn. The blades are connected to a drive shaft that turns an electric generator, which produces ...

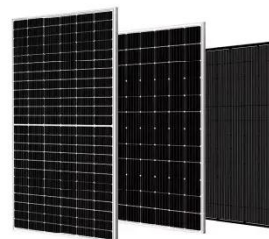


How Wind Turbines Work , EARTH 104: Energy, Environment, and ...

In a conventional power plant (fueled by coal or natural gas), combustion heats water to steam and the steam pressure is used to spin the blades of a turbine. The turbine is then connected to a generator, ...

How does a wind turbine generate electricity?

A wind turbine generates electricity by using the kinetic energy of wind to spin its blades, which are connected to a rotor. As the blades turn, the rotor spins a shaft connected to a generator.



Wind Energy : Types, Working Principles, Components and Design

Wind energy is a form of renewable energy that is generated by converting the kinetic energy of moving air into usable electrical power. This conversion is achieved using wind turbines, which capture the ...



How does a wind turbine work?

The wind - even just a gentle breeze - makes the blades spin, creating kinetic energy. The blades rotating in this way then also make the shaft in the nacelle turn and a generator in the nacelle ...



The Science Behind Wind Blades and How They Work

Learn about the science behind wind blades and how they are designed to capture energy from the wind and turn it into electricity!



Contact Us

For catalog requests, pricing, or partnerships, please visit:
<https://www.peregrine-energy.co.za>

