

PEES Power Systems

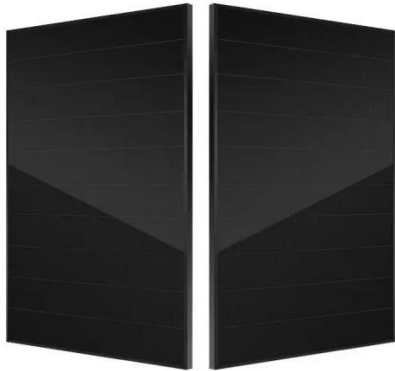
The photovoltaic grid line turns black



Overview

The black lines serve as grounding and indicate negative terminals essential for enhancing system stability. The red line is often associated with the bus bars that facilitate. The grid lines are essential for the panels to generate usable electricity, and without them, your panel would be little more than a glorified sunlight absorber. Get up closer, though, and you can see that solar modules have a pattern of white lines. Black objects take in all colors of light, allowing solar panels to capture more heat and convert it into electricity.

The photovoltaic grid line turns black



What Are The Grid Lines On Solar Panels For?

By contrast, all-black solar panels use black backings to hide the gaps and grid lines for a better rooftop appearance. While these black panels are easier on the eyes, they tend to run

How to detect and repair Solar Panel discoloration issues?

While maintaining your solar panel system you may notice some discoloration. It can affect its appearance and performance. Understanding these issues can help you identify and address ...



What are the black and red lines of solar panels? , NenPower

The black lines represent crucial grid lines that facilitate electricity flow from solar cells, ensuring efficient collection and conduction. On the other hand, the red lines, or bus bars, serve as ...

Solar Panel Discoloration: Causes, Effects, and How to Prevent it

Solar panel discoloration is typically the result of long-term exposure to the elements, such as sunlight, rain, and dust. This issue may affect the aesthetic appearance of the panels, but it ...

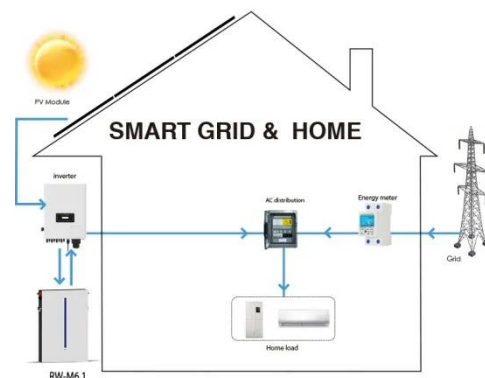


What do the red, blue and black lines of solar panels represent?

The black lines serve as grounding and indicate negative terminals essential for enhancing system stability. Proper grounding is crucial in preventing electrical shocks and ensuring the ...

Why Do Photovoltaic Panels Have Grid Lines? , IWS

While maintaining your solar panel system you may notice some discoloration. It can affect its appearance and performance. Understanding ...



What to do if the back of the photovoltaic panel turns black

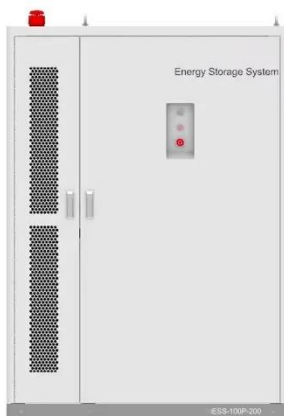
It is especially important to keep the



solar cell colours uniform on full black panels to prevent blotchy colours on black roofs. Uneven solar cell colours can result in disappointing full black installations.

Exploring the Science Behind Why Solar Panels Are Black Instead of

While there is a debate about whether black or white solar panels are better in terms of efficiency and aesthetics, it is clear that the science behind why solar panels are black revolves ...



Why does the photovoltaic panel welding strip turn black

Application and process of super soft welding strip Solar cells in the welding process will appear a variety of welding defects, but the most common welding defects should be debris, black spots

Why Do Photovoltaic Panels Have Grid Lines? , IWS

These photovoltaic modules still have

the necessary gaps, but the black backing hides them. Eliminating the gap lines makes the photovoltaic modules more aesthetically appealing -- from ground level, ...



Why Solar Panels Blue or Black in color and has many White Lines?

Actually, the solar panel does not have any white lines, they are maybe the gaps between solar cells or the fingers or the busbar. Fingers and Busbar are nothing but electrical conductors. ...

Contact Us

For catalog requests, pricing, or partnerships, please visit:
<https://www.peregrine-energy.co.za>

