

PEES Power Systems

The lowest generator wind temperature



Overview

Typical values: Most wind generators have a cut-in speed around 3 m/s, with some models starting at 2.5 m/s, and others needing up to 3. This corresponds to a Level 2 breeze (1). The following selections focus on low RPM or gearless designs, robust construction, and stable output to maximize energy capture in modest breezes. Its precise injection-molded blades and durable materials mean less vibration and longer life, making it reliable even in. Below is a summary table showcasing the top small wind generators selected for their efficiency, durability, and performance. It features a 12V three-phase AC permanent magnet synchronous generator optimized for quiet operation at just 55dB. Its MPPT microprocessor controller intelligently. The V150-4.

The lowest generator wind temperature



10 Best Wind Generator Kits to Harness Renewable Energy at Home

You'll appreciate its low startup wind speed of just 2.5m/s, making it suitable for various applications like homes, farms, and RVs. Built from durable materials, it operates quietly at 55dB and ...

What is the difference between "minimum" and "minimal"?

3 In mathematical terms generally minimum means the lowest possible, it is unique. Minimal on the other hand can be sub-optimal. There can be several minimal solutions but only one ...



Best Small Wind Generators for Home Use: Efficient & Reliable Options

Turbines from 500W to 1000W are common for household use, depending on how extensively you intend to use wind energy. A lower startup wind speed enables the turbine to begin ...

Best Low RPM Generators for Wind Turbines - Trowbridge Electrical

For off-grid or hybrid wind-solar setups, selecting a low RPM generator that efficiently converts slow wind speeds into usable electricity is essential. The following products are chosen for ...



'Less' or 'lower'

I am struggling with deciding between 'less' or 'lower'. For example I have the three sentences: Method A leads, on average, to 50 kWh less/lower surplus energy per day. The results ...

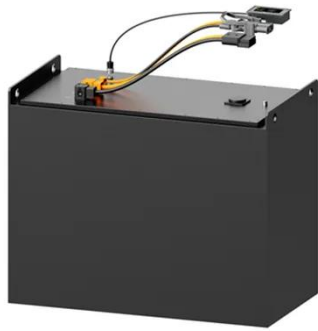
Best Low Speed Wind Generator [Updated: February 2026]

What really stood out was the advanced MPPT boost charging control, which ensures maximum power output in low wind conditions without dragging down the turbine. Unlike some ...



"least" vs. "lowest"

What is the difference between least and



lowest? Websites announce as "Lowest prices", but not "least". Least is the superlative degree. low > lower > least ?

What does the phrase "lowest common denominator" mean?

I'm not a native speaker and was wondering what exactly does "lowest common denominator" mean? I was always under the impression that it referred to something base that is ...



- IP65/IP55 OUTDOOR CABINET
- OUTDOOR MODULE CABINET
- OUTDOOR ENERGY STORAGE CABINET
- 19 INCH

"Lowest" vs. "lowermost"

Is there any difference between the words lowest and lowermost? When should I use either of them? Possibly lowermost should never be used?

Best Low RPM Generator Options for Wind Turbines and Hybrid ...

Finding generators that perform efficiently at low wind speeds is essential

for reliable wind energy, especially in residential and off-grid setups. The following selections focus on low RPM or

...



What Wind Turbine Generators Are Low Speed?

Most wind turbines require winds of 27 mph for full energy production, so a lower threshold turbine is recommended for those living in less windy areas. Manufacturers are now offering large ...

Best Wind Turbine Generator Systems for Home and Off-Grid Power

This article reviews some of the best wind turbine generator systems available, highlighting key features such as power output, durability, and ease of installation.



Best Small Wind Generators for Home Use to Maximize Renewable ...



Turbines range from 100W for minimal usage to 1000W or more for substantial power generation. Match the turbine capacity with your typical needs and potential future expansion. The ...

How Much Wind Does a Wind Generator Need to Work Efficiently?

In this article, we explain the four key wind speed levels that determine when a wind turbine starts working, produces full power, stops, and how much wind it can survive. 1. Cut-in Wind Speed - ...



A Comparison of Generator Technologies for Offshore Wind ...

Despite the lower drivetrain efficiency, MS-PMSG shows the lowest cost of energy. However, we did not model operations and maintenance costs, which might increase with a gearbox or new technology, ...

Does English have words to describe the lowest rank

member of ...

The lowest-ranking person in society might be a serf:- a person in a condition of servitude, required to render services to a lord, commonly attached to the lord's land and transferred ...

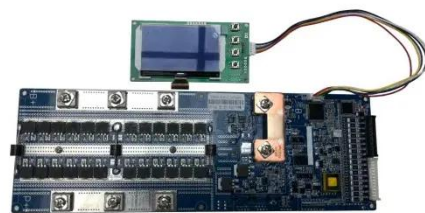


What does "the lowest common denominator" mean in the context ...

Merriam-Webster traces "lowest common denominator" to 1854 and "least common denominator" to 1851. It is therefore quite interesting that the earliest matches for "lowest common ...

How are least, lowest, and fewest used differently?

Then I questioned whether either "What is the least number of people?" or "What is the fewest number of people?" is a superior alternative. My guess is that the "fewest number" option is ...



Contact Us

For catalog requests, pricing, or partnerships, please visit:

<https://www.peregrine-energy.co.za>

