

## PEES Power Systems

# The length of the wind turbine for wind power generation



## Overview

---

The length of wind turbine blades varies considerably, depending on whether they are intended for onshore or offshore installations and their power capacity. Modern onshore wind turbines commonly feature blades averaging between 70 to 85 meters (approximately 230 to 279 feet) in. Forty years ago, wind turbine blades were only 26 feet long and made of fiberglass and resin [3]. Modern blades are made from carbon-fiber and can withstand more stress due to higher. Wind energy has undergone a massive transformation, represented by the colossal blades propelling turbines into the future of renewable power. In this article, we'll explore the evolution, manufacturing processes, challenges, and innovations in wind turbine blade. The length of the blades is the biggest factor in determining the amount of electricity a wind turbine can generate. Small wind turbines that can power a single home may have an electric-generating capacity of 10 kilowatts (kW).

## The length of the wind turbine for wind power generation

---



### What Is The Length And Height Of A Wind Turbine?

Wind turbines are significant structures, with blades averaging 210 feet in length and towers exceeding 320 feet tall, surpassing the height of the Statue of Liberty.

### Types of wind

There are two basic types of wind turbines: The size of wind turbines varies widely. The length of the blades is the biggest factor in determining the amount of electricity a wind turbine can generate. ...



### How Long are Wind Turbine Blades: The Quick Guide to Their ...

Wind energy has undergone a massive transformation, represented by the colossal blades propelling turbines into the future of renewable power. From modest beginnings with blades a ...

## Wind Turbine Blade Size: How Big Are They and Why?

The length of a wind turbine's blades directly affects its wind-swept area, which is the total planar area covered by the rotor. Turbines with longer blades cover a larger area, allowing them ...

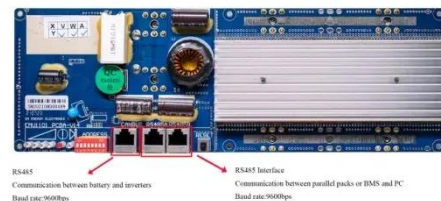


## How Long are Wind Turbine Blades?

Wind energy has undergone a massive transformation, represented by the colossal blades propelling turbines into the future of renewable power. ...

## Wind Turbines: the Bigger, the Better

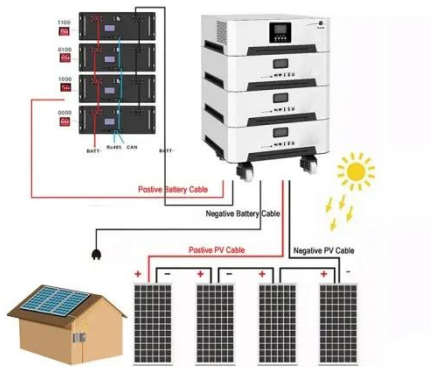
Since the early 2000s, wind turbines have grown in size--in both height and blade lengths--and generate more energy. What's driving this growth? Let's take a closer look.



## Wind turbine

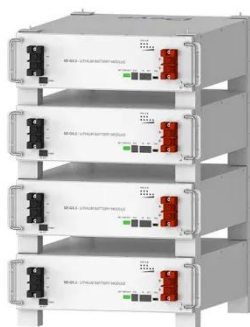
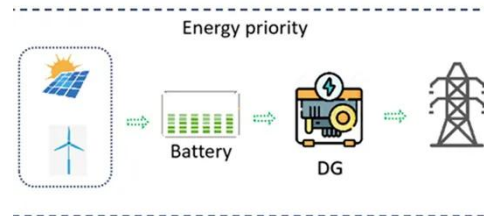
As of 2020, hundreds of thousands of large turbines, in installations known as wind farms, were generating over 650 gigawatts of power, with 60 GW added

each year. [1] Wind turbines are an ...



## How Long Are Wind Turbine Blades? Factors & Size Explained

The length of wind turbine blades varies considerably, depending on whether they are intended for onshore or offshore installations and their power capacity. Modern onshore wind ...



Deye Official Store

10 years warranty

## How Long are Wind Turbine Blades?

Today, blades can be 351 feet, longer than the height of the Statue of Liberty, and produce 15,000 kW of power. Modern blades are made from carbon-fiber and can withstand more stress due ...

## How Long Are the Blades on a Wind Turbine: Mind-Blowing Facts

Modern onshore wind turbines typically have blades ranging between 40 and 70 meters in length. Offshore turbines, often built at a grander scale, can exceed 80 meters per blade. To put that in ...



## Wind Turbine Blade Lengths: Evolution and Impact

Wind turbine blade lengths have doubled in size, enabling higher energy outputs and efficiency through advancements in materials and aerodynamics. Modern blades average 50-70 ...

## Contact Us

For catalog requests, pricing, or partnerships, please visit:  
<https://www.peregrine-energy.co.za>

