

PEES Power Systems

Solar photovoltaic generator model



Overview

This example shows how to create system-level model of a photovoltaic generator that can be used to simulate performance using historical irradiance data. Power generation steps immediately. This article contains a general description of the WECC generic models based on REMTF technical specifications approved by WECC. Grid-connected PV system includes a PV array, a control.

Solar photovoltaic generator model



Photovoltaic Generator

This example shows how to create system-level model of a photovoltaic generator that can be used to simulate performance using historical irradiance data.

MATLAB/Simulink project in modeling a photovoltaic generator

MATLAB , Simulink project where a photovoltaic generator system is modelled directly. Both a temperature and irradiance distribution is fed into a Solar Array module from Matlab.



Modelling and Simulation of Photovoltaic Systems Using ...

The PV generator model has been developed in such a way that the desired generator power and generator current can be obtained by connecting the appropriate number of PV panels in series with ...

Generic Models (PV Plants)

WECC approved the use of two generic dynamic models for PV plants: (a) a model consisting of plant controller, electrical controls and grid interface modules, intended for large-scale PV plants, and (b) a ...



Solar Generator Design Using MATLAB Simulink

Abstract - This paper presents the modeling and simulation of a solar generator system using MATLAB/Simulink. With the growing interest in renewable energy sources, solar power generation ...

Generic Models (PV Plants)

Technical Specifications For The WECC Generic Models
 WECC Generic Model For Large-Scale PV Plants
 WECC Generic Model For Distributed and Small PV Plants
 Summary
 The PV plant generic models described in this article are intended for general bulk system planning studies. The general guidelines discussed here should be used in conjunction with the model documentation provided as part of the relevant simulation platform. Selection of appropriate model parameters requires consultation with inverter manufacturer See more on esig.energy



Videos of Solar Photovoltaic Generator model

Watch video10:52Solar power generation for home using MATLAB Simulink , Solar power system for home , Solar PV Grid All About EEE149.2K viewsWatch full videoWatch video10:17? Best Solar Generator 2025 [Watch This Before You Make a Choice!] Foremost Picks35.4K views7 months agoWatch video14:33Simulation of a Microgrid (PV Solar System, Utility Grid, BESS and Diesel Generator) in MATLAB PZ Engineering26.5K viewsWatch video16:51DIY Solar Generator / Power Station ,, Start to Finish Build Jacob Pratt43.4K viewsWatch full videowecc [PDF]

WECC WPP Power Flow Modeling Guidelines

WECC approved the use of two generic dynamic models for PV plants: (a) a model consisting of plant controller, electrical controls and grid interface modules, intended for large-scale PV plants, and (b) a ...

Photovoltaic generator model for power system dynamic studies

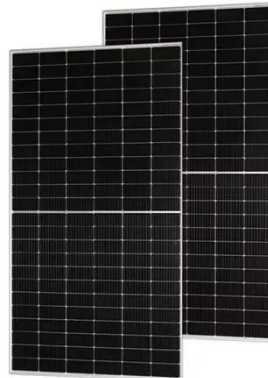
This paper reviews the state-of-the-art PV generator dynamic modeling work, with a focus on the modeling principles of PV generator for the power system

dynamic studies.



User Guide for PV Dynamic Model Simulation Written on PSCAD ...

This document describes the dynamic photovoltaic (PV) model developed by the National Renewable Energy Laboratory and is intended as a guide for users of these models.



Modelling and Dynamic Analysis of Solar Photovoltaic Generation

This paper establishes a dynamic model of grid-connected PV system by Matlab/Simulink to reflect the characteristics of the system accurately. Based on the accurate modelling system, maximum power ...

Photovoltaic generator model for power system dynamic

studies

The paper presents the detailed modeling process for the recommended PV generator dynamic model, and clarifies the assumptions and simplifications made in the modeling process, thus ...



WECC WPP Power Flow Modeling Guidelines

WECC approved the use of two generic dynamic models for PV plants: (a) a model consisting of plant controller, electrical controls and grid interface modules, intended for large-scale PV plants, and (b) a ...

Contact Us

For catalog requests, pricing, or partnerships, please visit:
<https://www.peregrine-energy.co.za>

