

PEES Power Systems

Solar panel 590 watt voltage



Solar panel 590 watt voltage



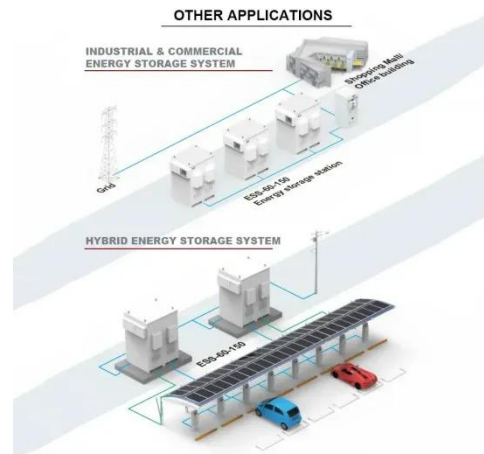
- LIQUID/AIR COOLING
- ON GRID/HYBRID
- PROTECTION IP54/IP55
- BATTERY /6000 CYCLES

590W Solar Panel TFL Series

590W Solar Panel TFL Series
 TFL-210X30_10_36 Maximum Power-Pm [W] 590 Open Circuit Voltage-Voc [V] 48.08 Short Circuit Current-Isc [A]

Longi 590 Watt Hi-Mo 7 Bifacial Solar Panel

Longi 590 Watt Hi-mo 7 Bifacial Solar Panel Longi Solar Panel Hi-mo 7 Bifacial 590M Features: Based on M10 wafer, best choice for ultra-large power plants Cutting-edge technology delivers ...



590W N-Type Bifacial Solar Panel(2-Pack)

Upgrade with Renogy 590W N-Type Bifacial Solar Panels. Get up to 30% yield boost with 25% cell efficiency. Perfect for off-grid living, tiny homes & home solar.

590-Watt Solar Panels: A

Beginner's Guide to High-Efficiency ...

Discover the benefits, applications, and cost considerations of 590-watt solar panels. This comprehensive guide explains how these powerful modules can help you save money, reduce ...



Saatvik , N TOPcon Bifacial (G2G) 560-590W , Solar Panel

...

Saatvik Green Energy Ltd Solar Panel Series N TOPcon Bifacial (G2G) 560-590W. Detailed profile including pictures, certification details and manufacturer PDF

How to Choose the Best 590W Solar Panel: A Complete Buying ...

A 590-watt (590W) solar panel is a high-efficiency photovoltaic module designed to generate significant electricity from sunlight. Unlike traditional panels that range from 250W to 400W, ...



Bestcom 590W Monocrystalline Half-Cut Solar Panel - ...



The Bestcom 590W Mono Crystalline Half-Cut Solar Panel is a premium solar energy solution designed for large-scale residential, commercial, and industrial applications.

High Efficiency 590W Solar Panels: The Ultimate Buying Guide

N Type High Efficiency 590W Solar Panels are designed to capture sunlight more effectively than traditional solar panels. With a maximum output of 590 watts per panel, they offer higher efficiency ...



GS10-M156-WF-590W

The GS10-M156-WF-590W from Goldi Solar is a Solar Panels with Output Power 590 W, Output Voltage 45.25 V, Output Current 13.04 A, Temperature Operating Range -40 to 85 Degree C. Tags: Panel. ...

Longi 590 Watt Hi-Mo 7 Bifacial Solar Panel

Longi 590 Watt Hi-mo 7 Bifacial Solar

Panel Longi Solar Panel Hi-mo 7 Bifacial
590M Features: Based on M10 wafer,
best choice for ultra-large power plants
Cutting-edge technology delivers
superior ...



Contact Us

For catalog requests, pricing, or partnerships, please visit:
<https://www.peregrine-energy.co.za>

