

PEES Power Systems

Solar Off-Grid Power Generation Training Manual



Solar Off-Grid Power Generation Training Manual



6. Installation, Operations, and Maintenance of Off-Grid Solar

The below slides provide a high-level overview of concepts and approaches for installation and maintenance of photovoltaic (PV) systems, but they do not constitute formal training or certification ...

Off Grid System Design , Training Courses , Solamp Solar & Energy ...

Off Grid System Design - Professional solar training course from Solamp. Learn at your own pace with our Moodle LMS.



Complete Off Grid Solar System Guide 2025: Components & Installation

This comprehensive guide covers everything you need to know about off grid solar systems, from understanding the core components to designing, installing, and maintaining your own ...

Off-Grid Solar System Design and Installation manual ...

This comprehensive guide will help you to set up a reliable off-grid solar system, providing step-by-step instructions for seamless system design and installation.

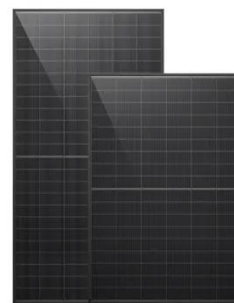


Off-Grid Solar Systems for Beginners: What You Need and How to ...

Ready to go off-grid? Learn how to build your own solar system step-by-step, from components to cost to setup, with EcoFlow's complete beginner's guide.

Beginner's Off-Grid Training Guide

Solar + Storage + Power Off-Grid
Training Guide for the Shonto
Community Off-Grid Solutions



3kW Residential Off-grid Solar Energy System User Manual 2025-03

This document is prepared for a residential off-grid solar energy system



- 
Efficient Higher Revenue
 - Max. Efficiency 97.5%
 - Max. PV Input Voltage 600V
 - 150% Peak Output Power
 - 2 MPPT Trackers, 150% DC Input Oversizing
 - Max. PV Input Current 16A, Compatible with High Power Modules
- 
Intelligent Simple O&M
 - IP65 Protection Degree: support outdoor installation
 - Smart I-V Curve Diagnosis Function: locate PV string faults accurately and automatically detect faults
 - DC & AC Type II SPD: prevent lightning damage
 - Battery Reverse Connection Protection
- 
Flexible Abundant Configuration
 - Plug & Play, EPS Switching Under 30ms
 - Compatible with Lead-acid and Lithium Batteries
 - Max. 6 Units Inverters Parallel
 - AFCI Function (Optional): when an arc fault is detected the inverter immediately stops operation

in 3kW/6kWh configuration, and covers product introduction, component introduction, installation, debugging, and system maintenance.

CE519: Off-grid System Considerations

There are many things to consider when sizing and designing an off-grid PV system. In this course, we'll provide a high-level overview, which will primarily focus on DC coupled off-grid systems.



The Ultimate OFF-GRID Solar Energy Course. Updated 2026!

Enrol now to go through a deep dive into the most Complete OFF-GRID Solar course on UDEMY. As your instructor, I will share with you more than 10 years of experience in Solar Energy to guide you ...

PRACTICAL OPERATION AND MAINTENANCE MANUAL FOR ...

This document contains information about SESA core activities, findings, and

outcomes. The content of this publication is the sole responsibility of the SESA consortium and cannot be considered to reflect ...



Contact Us

For catalog requests, pricing, or partnerships, please visit:
<https://www.peregrine-energy.co.za>

