

PEES Power Systems

Safe distance from energy storage power station



Safe distance from energy storage power station

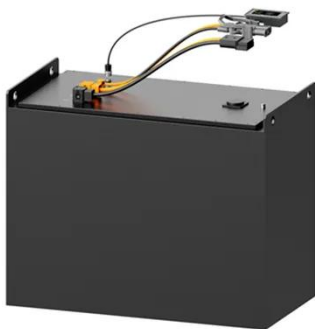


Safety Distance of Electrochemical Energy Storage Power Stations

Why Safety Distance Matters in Energy Storage Systems When planning an electrochemical energy storage power station, safety distance isn't just a regulatory checkbox - it's your first line of defense ...

Energy storage power station setback distance

Having an appropriate setback from the National Grid has important safety benefits such as preventing damage to property and risk of harm to people. For Battery Energy Storage Systems (BESS), the risk ...



Safety distance of energy storage power station

The first phase of the power station energy storage power and power generation installed capacity of 60 MW, energy storage capacity of 300 MW H, long-term construction scale of 1000 MW. (2018) ...

Jiangsu issues safety standards for user-side energy storage

Changzhou Local Standard: This standard specifies the minimum safety distances between different types of energy storage power stations and risk areas. For example, the safety ...



Essential Safety Distances for Large-Scale Energy Storage Power Stations

Discover the key safety distance requirements for large-scale energy storage power stations. Learn about safe layouts, fire protection measures, and optimal equipment spacing to ...

What is the explosion-proof distance of the energy storage power station?

Understanding the material composition of the energy storage system lays the groundwork for establishing explosion-proof distance and overall safety protocols. The explosion ...



Energy Storage Safety Distance Requirements: What

You ...

But if you're an engineer, facility manager, or renewable energy enthusiast, this topic is hotter than a lithium-ion battery in a heatwave. With global energy storage capacity projected to surge 56% by ...



safety distance requirements for energy storage power station ...

The typical framework of the wind-photovoltaic-shared energy storage power station consists of four parts: wind and photovoltaic power plants, shared storage power station, the grid and the user.



Safety distance requirements for energy storage power ...

Are battery energy storage systems the future of grid stability? Battery Energy Storage Systems represent the future of grid stability and energy efficiency. However, their successful implementation ...



Fire Protection Distance Requirements for Energy

Storage Power Stations

Fire Protection Distance Requirements for Energy Storage Power Stations: Safety Standards and Best Practices Who Needs This Guide and Why? If you're planning, operating, or maintaining an energy ...



Contact Us

For catalog requests, pricing, or partnerships, please visit:
<https://www.peregrine-energy.co.za>

