

PEES Power Systems

Photovoltaic solar panels are a bit shaded



Photovoltaic solar panels are a bit shaded



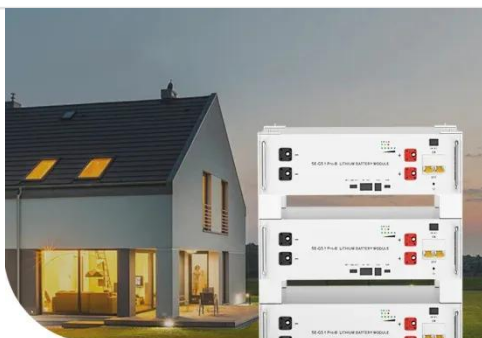
Do solar panels work in the shade? A complete guide to solar panel

When a solar panel has one or a few of its cells under shade, unless the bypass diodes are activated, the shaded cells will limit the power production and will consume the extra energy ...

Solar Panel Direct Sunlight vs Shaded (2025 Guide)

Panels perform best in direct sun, but they can still generate electricity in cloudy conditions or even when partially shaded. The real difference comes down to how much energy is lost under shade

-- ...



Low Voltage
Lithium Battery

6000+ Cycle Life

Do solar panels work in the shade?

Do solar panels work in the shade: Shade can significantly reduce solar energy production, but modern technology allows panels to generate some power even in partial shade.

Will Solar Panels Work in Shade? Common Misconceptions

Explore the truth about solar panels in shade, including common myths, downsides, and real-world examples of performance and savings.



Display screen
Linux operation system
quad-core processors
smooth and stable system



Will Solar Panels Work in the Shade? Everything You Need to Know

Partial shading reduces output but doesn't stop production completely. Newer models perform significantly better under obstructions than older versions. Weather conditions like rain can ...

Effect of Shading on Solar Panels' Efficiency

Solar panel shading greatly affects solar photovoltaic (PV) panels. Total or partial shading impacts the ability to deliver energy, which can lead to decreased output and power losses.



Do Solar Panels Work in the Shade? Uncover the Truth



The truth is, solar panels can still produce electricity in the shade, but at a reduced rate. Shade affects their ability to absorb sunlight, which is vital for energy production. Different types of ...

What Is Solar Shading, and Does It Affect Their Efficiency?

Photovoltaic cells in the shade produce less energy compared to those in the sun. Even if a small part of the solar panel in shade, it will significantly reduce overall performance. For example, ...



FLEXIBLE SETTING OF MULTIPLE WORKING MODES



Shade And Solar Panels: What You Need to Know

Solar panels can still function in shaded conditions, though their efficiency is reduced compared to full sunlight exposure. Modern solar panel technology, including photovoltaic cells, is capable of ...

Do Solar Panels Work When Partially Shaded?

What happens if solar panels are partially shaded? A typical photovoltaic

solar panels consists of a configuration of 32 to 72 solar cells that are connected series. This makes solar panels ...



Contact Us

For catalog requests, pricing, or partnerships, please visit:
<https://www.peregrine-energy.co.za>

