

PEES Power Systems

Photovoltaic panel charging calculation formula



Overview

Estimate how long it takes your solar panel to charge a battery based on panel wattage, battery capacity, voltage, and charge efficiency. Formula: Charging Time (h) \approx (Battery Ah \times V \times (Target SOC / 100)) \div (Panel W \times (Eff% / 100)). Adjust for sunlight hours to find daily charging duration. Convert battery capacity from Ah to Wh by multiplying with voltage. Factor in 20–30% efficiency loss from heat, wiring, and controllers. Panel. The Solar Battery Charge Time Calculator determines the time required to fully charge a solar battery based on various input parameters.

Photovoltaic panel charging calculation formula



Solar Panel Charge Time Calculator: Accurately Estimate How Long ...

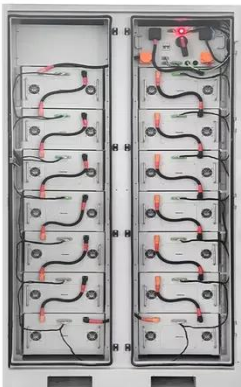
Estimating how much time it will take to fully charge a battery using solar panels is not always simple. There are many different variables that will affect the ultimate result, such as the size ...

Solar Panel Charging Time Calculator

This solar panel charge time calculator for 12V batteries will then dynamically determine the number of hours required for the solar panel to fully charge a battery from 0% to 100%.



To Strive forward No Energy Waste



- ✓ All in one
- ✓ 100~215kWh High-capacity
- ✓ Intelligent Integration

Solar Battery Charge Time Calculator

The underlying formula for calculating solar battery charge time involves dividing the battery capacity by the solar panel's effective output (considering insolation and efficiency).

Solar Panel Charging Time Calculator - Plan Your Energy Use

Step 1 - Convert Sunlight to Electricity: Solar panels are made of photovoltaic (PV) cells. When sunlight hits these cells, it excites the electrons, causes them to move around and create DC ...



How to Calculate Charging Time of Battery by Solar Panel

Whether you're powering up a home system or a weekend camper, knowing the math behind charging time saves you stress--and surprises. Let's break it down into simple steps anyone ...

Solar Panel Charging Calculations of a Battery (Calculated)

Solar panel calculators that calculate battery charging time can assist you in understanding production and consumption. You won't be able to grasp the efficiency until you do the ...



Solar Panel Charge Time Calculator

Charging time of solar battery =



charging amount of solar battery (Wh) / total power of solar panel (W) Substitute the data to get the charging time of your solar battery is about 27 minutes.

How to Calculate Charging Time of Battery by Solar Panel: A

Discover how to accurately calculate the charging time for your battery using solar panels in this comprehensive guide. Learn about the different types of solar panels, key factors ...



Solar Panel Charging Time Calculator , SolarMathLab

Accurately calculate how long your solar panel takes to charge a battery using panel wattage, voltage, capacity (Ah), efficiency, and daily sunlight hours. Fast, reliable solar charging time calculator.

Solar Panel Charge Time Calculator , Battery Charging Time Tool

Calculate how long it will take to charge your battery with a solar panel based on capacity and charging conditions. Get accurate estimates for charging time and daily output.



Contact Us

For catalog requests, pricing, or partnerships, please visit:
<https://www.peregrine-energy.co.za>

