

PEES Power Systems

Photovoltaic combiner box cable load range



Overview

As solar installations expand globally, understanding photovoltaic combiner box cable load range has become the make-or-break factor for energy producers. Let's unpack this technical puzzle that's keeping engineers awake at night. A solar combiner box is a crucial component in solar energy systems, designed to consolidate the outputs of multiple solar panel strings into a single output that connects to an inverter. Current Collection: Consolidates DC output. A PV combiner box, at its heart, is an electrical distribution box. Think of your solar panels arranged in groups, or "strings. Instead of running many individual wires from all these strings directly to your inverter (which would be messy, expensive, and. Each combiner box comes with advanced features including up to 1500V 400A UL Listed DC Disconnects and UL Listed Fuses from 10A to 56A, delivering unbeatable performance with utmost safety.

Photovoltaic combiner box cable load range

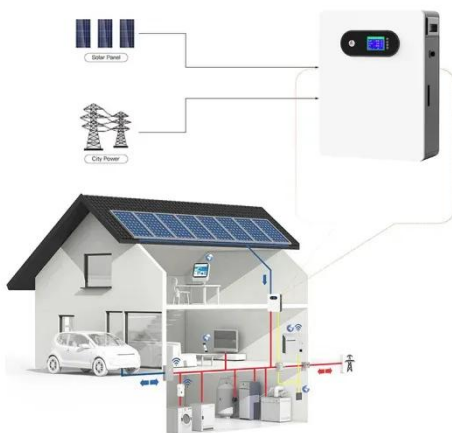


PV combiner box comprehensive analysis

For example, if you have 8 strings of solar panels, you would have 16 wires (positive and negative for each string) coming from the array. The combiner box takes these 16 input wires and ...

The Ultimate Guide to Solar Combiner Boxes: From Basics to ...

Solar combiner boxes play a vital role in various solar energy projects, facilitating the integration and management of multiple solar panel strings. Below are some notable case studies ...



Understanding PV Combiner Boxes: Design, Function, Protection, and

A complete guide to PV combiner boxes, covering structure, safety protection, monitoring, IP ratings, selection principles, and future smart trends. Learn how advanced combiner ...

Solar Combiner Boxes - RAND Manufacturing Group - Solar

RAND PV Solar Combiners offer you a unique customization potential to match your solar needs, featuring an 10 string to 24 string capability, NEMA 4X outdoor aluminum enclosures, and UL Listed ...

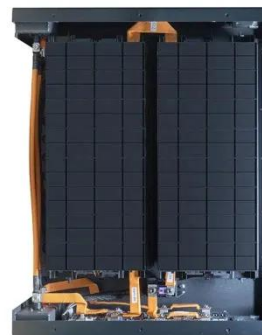


PV Combiner Box Wiring Standards: NEC 690.15 Compliance 2025

Understanding PV combiner box wiring standards ensures code-compliant installations meeting NEC 690.15 requirements while delivering reliable long-term performance.

Photovoltaic combiner box cable load range

The total voltage can be increased by converging the input of PV array, it also can reduce the connection of the photovoltaic array to the inverter, optimize the system structure, improve the



How to Calculate PV Combiner Box Specifications?



In this article, we walk you through a real-world case--144 solar panels of 555W each paired with a powerful 80kW inverter--and demonstrate exactly how to calculate your system's configuration.

...

Photovoltaic DC Combiner Box Capacity: A Comprehensive Guide for ...

Summary: Understanding the capacity of photovoltaic DC combiner boxes is crucial for optimizing solar energy systems. This guide explores sizing principles, industry trends, and practical solutions to help ...



Photovoltaic Combiner Box Cable Load Range: Critical Factors for ...

As solar installations expand globally, understanding photovoltaic combiner box cable load range has become the make-or-break factor for energy producers. Let's unpack this technical puzzle ...

Calculation of photovoltaic

array combiner box

What is a combiner box in a photovoltaic system? In a photovoltaic system, a combiner box acts as a central hub that consolidates and manages the direct current (DC) output of multiple solar panels. Its ...



Contact Us

For catalog requests, pricing, or partnerships, please visit:
<https://www.peregrine-energy.co.za>

