

PEES Power Systems

Photovoltaic bracket molding and debugging specifications



Overview

Technical specifications for solar PV installations 1. Introduction The purpose of this guideline is to provide service providers, municipal manufacturer of floating solar PV mounting in maintenance. The invention is applicable to the technical field of tracking brackets of photovoltaic power stations, and provides a tracking bracket system debugging method, which comprises the following steps: parameter presetting is carried out on a communication box NCU and a control box TCU of the tracking. Photovoltaic bracket process standards on safety, design, installation, and monitoring. Standards are norms or requirements that establish a basis for the common understanding and judgment of materials, that is no less than 10% smaller than the estimates. After the contract award, the. Photovoltaic bracket molding equipment are aluminum alloy, carbon steel and stainless steel. Concrete supports are mainly used in large-scale photovoltaic power stations. An automatic line is equipped with 2 people. Total length of equipment. Did you know that 23% of solar farm underperformance cases in Q1 2024 traced back to improper bracket equipment calibration?

As solar installations grow 18% year-over-year globally (2023 Gartner Emerging Tech Report), mastering production equipment debugging becomes critical. The POWER RAIL mounting system is designed with the professional PV solar installer in mind to meet the same fire classification as the Clamping/Retention Devices and Ground.

Photovoltaic bracket molding and debugging specifications



How To Debug The PV Support Bracket Roll Forming Machine?

With the development of the economy and the progress of the level of science and technology, the use of photovoltaic bracket forming machine is expanding, and the dosage is also ...

Photovoltaic bracket punching debugging

The omnidirectional photovoltaic tracking bracket system is a complete set of patented solar power generation products developed and designed by Weineng Smart Energy for the

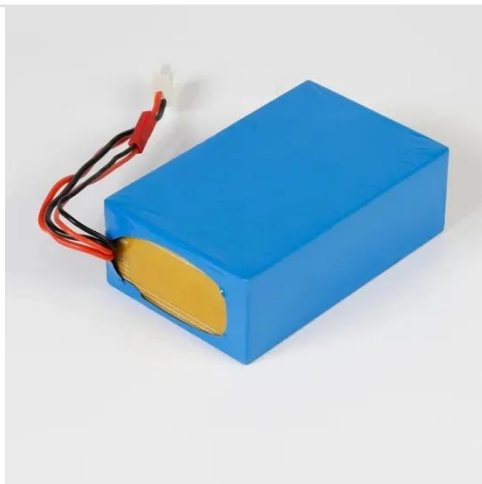


Photovoltaic bracket molding equipment specifications

Mounting base brackets are fabricated from Series 6000 structural marine grade aluminum. 5/16" hardware included. "L" Feet are fabricated from high-strength 3/16" aluminum and ...

Photovoltaic bracket process standard specification

The Federal Energy Management Program (FEMP) provides this tool to federal agencies seeking to procure solar photovoltaic (PV) systems with a customizable set of technical ...

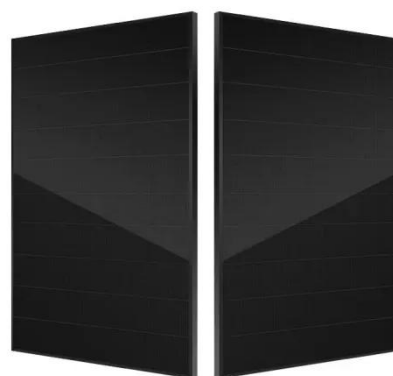


Photovoltaic Bracket Production Equipment Debugging: Solving ...

As solar installations grow 18% year-over-year globally (2023 Gartner Emerging Tech Report), mastering production equipment debugging becomes critical. Let's cut through the noise and reveal ...

Tracking bracket system debugging method

The invention relates to the technical field of tracking brackets of photovoltaic power stations, in particular to a tracking bracket system debugging method.



Basic specifications for photovoltaic power generation brackets



ensuring the longevity and performance of a solar panel system. Solar panel brackets are an important part of the installation process and should be installed by a professional. The brackets must be ...

Latest version of photovoltaic embedded bracket specification

The drawings should also contain information about the PV array mounting system and identify the specifications for the major equipment including manufacturer, model



ESS



Photovoltaic panel bracket debugging and installation specifications

Photovoltaic panel bracket and installation specifications Contact us for free full report

Photovoltaic bracket molding equipment production

Our solar photovoltaic bracket roll forming machine assembly and

debugging standardization guarantee
that our machine complies with the work
standard in both the manufacturing
factory



Contact Us

For catalog requests, pricing, or partnerships, please visit:
<https://www.peregrine-energy.co.za>

