

PEES Power Systems

Norwegian energy storage system peak shaving and valley filling company



Norwegian energy storage system peak shaving and valley filling co



Peak shaving and valley filling energy storage

Abstract: In order to make the energy storage system achieve the expected peak-shaving and valley-filling effect, an energy-storage peak-shaving scheduling strategy considering the

Peak shaving

Energy storage systems, such as Battery Energy Storage System (BESS), are pivotal in managing surplus energy. These systems have gained traction with the emergence of lithium-ion batteries.



(PDF) Research on an optimal allocation method of energy storage system

Energy storage system (ESS) has the function of time-space transfer of energy and can be used for peak-shaving and valley-filling. Therefore, an optimal allocation method of ESS is

Strategies for Peak Shaving and Valley Filling in the Energy Sector

This project, which employs lithium iron phosphate storage technology, includes a comprehensive energy management system to ensure the stored electricity is used for self ...

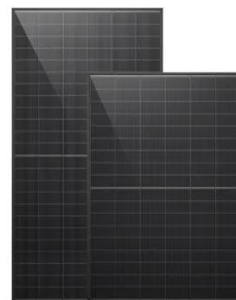


Peak Shaving and Valley Filling for Renewable Energy Integration

When solar and wind generation fluctuate, energy storage systems use valley filling to charge during low demand and peak shaving to discharge during high demand.

Peak Shaving and Valley Filling in Energy Storage Systems

Explore how energy storage systems enable peak shaving and valley filling to reduce electricity costs, stabilize the grid, and improve renewable energy integration.



What is Peak Shaving and Valley Filling?

Two strategic approaches, peak shaving

and valley filling, are at the forefront of this management, aimed at stabilizing the electrical grid and optimizing energy costs.



Peak shaving and valley filling energy storage project

This article will introduce Tycorun to design industrial and commercial energy storage peak-shaving and valley-filling projects for customers.



The Optimization Principle in the Era of Green Energy: Peak Shaving ...

Powered by advanced battery management systems and intelligent inverters, Solavita enables customers to achieve peak shaving, energy scheduling, and maximum economic benefits.

Peak Shaving and Valley Filling with Energy Storage Systems

What is Peak Shaving and Valley Filling?

Peak shaving and valley filling refer to energy management strategies that balance electricity supply and demand by storing energy during periods of low

...



Contact Us

For catalog requests, pricing, or partnerships, please visit:
<https://www.peregrine-energy.co.za>

