

PEES Power Systems

Lte base station power off



Lte base station power off



Energy efficient dynamic optimal control of LTE base stations: ...

The demand to reduce energy consumption in wireless networks has become popular recently. In this paper, aimed at the problem that how to reduce energy consumption through on-off ...

Test the ON/OFF power of your TD-LTE base station

Test the ON/OFF power of your TD-LTE base station The R& S®FSW signal and spectrum analyzer provides the high dynamic range needed to accurately measure the ON/OFF ...



LTE TDD Base Station Transmit On/Off Power Measurement

This document explains transmit On/Off power measurements of LTE TDD base stations using the Anritsu Signal Analyzer MS269xA series running the LTE TDD Downlink Measurement ...



LTE-A Base Station Transmitter Tests

The rated output power (PRAT) of the base station is the mean power level per carrier for BS operating in single carrier, multicarrier, or carrier aggregation configurations that the manufacturer ...



E-UTRA Base Station Transmitter ON/OFF Power ...

See how Keysight's N9082A LTE TDD Measurement Application makes standards-compliant E-UTRA base station transmit ON/OFF power measurements.

Base Station ON-OFF Switching in 5G Wireless Networks: ...

Abstract--To achieve the expected 1000x data rates under the exponential growth of traffic demand, a large number of base stations (BS) or access points (AP) will be deployed in the ...



Test the ON/OFF power of your TD-LTE base station

TD-LTE base stations need to pass two transmit ON/OFF power tests defined in chapter 6.4 of the 3GPP TS 36.141

technical specification: Transmitter OFF
power The purpose of the transmitter
OFF ...



Power Saving Approach in LTE Using Switching ON/OFF eNodeB ...

In this paper, we propound a method that consists in lowering down energy consumption in fourth generation cellular network. The main idea is to switch ON/OFF LTE-Advanced Base ...



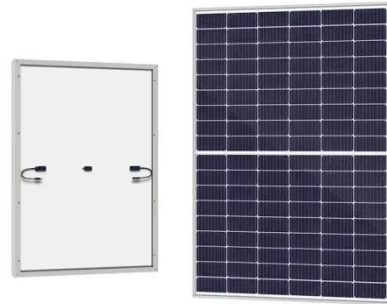
Improving Energy Efficiency in Backhaul of Lte-A Network With Base

The efficient way to save the energy in a cellular network is to turn off a base station (BS) in a low load period. Without sacrificing the user traffic demand, most of the work aimed at when to ...

Power Base Station

If an adjacent base-station transmission

(UTRA or LTE) is detected under certain conditions, the maximum allowed Home base-station output power is reduced in proportion to how weak the ...



Contact Us

For catalog requests, pricing, or partnerships, please visit:
<https://www.peregrine-energy.co.za>

