

PEES Power Systems

Junction box explained



Junction box explained



How Do Junction Boxes Work?

Junction boxes help ensure the building's power supply can flow without interruption. They secure wires and prevent undue tension on the cables, which could cause a wire to pull from a connection.

What Is A Junction Box And What Does It Mean For Your Home's

Because spliced wires tend to be warm, which could ignite insulation or even drywall material, a junction box is often necessary when adding new light fixtures, outlets, or other electrical ...

Lithium battery parameters

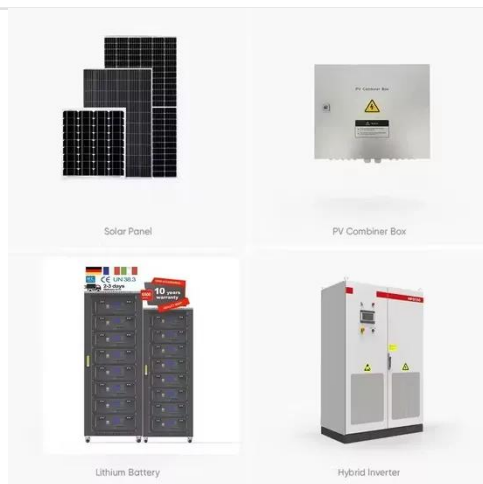
Product capacity: 100Ah

Product size: 135*197*35mm

Product weight: 1.82kg

Product voltage: 3.2V

internal resistance: within 0.5



What Is a Junction Box?

Junction boxes are crucial elements in the electrical wiring systems of homes and commercial buildings, designed to house and protect electrical connections. These boxes, made of ...

Understanding What is a Junction Box: Key Concepts Explained

Junction boxes are critical infrastructure--not merely "wire tidy" points. They protect people and property, organize networks, and demonstrate compliance in inspections.



What Is a Junction Box? , Angi

A junction box is a protective enclosure where electrical wires connect, splice, and safely distribute power. Homeowners should match junction box size and material to wiring and location for ...

What is a Junction Box? A Complete Beginner's Guide

Learn what a junction box is, why it matters, the different types available, and how to choose the right junction box for safety and reliability.



What Is a Junction Box Used For and Why It Matters

A junction box is an enclosure that safely houses electrical connections -- where two or more wires meet, split, or



continue. Its job is to contain electrical splices, protect conductors from ...

What is a Junction Box? Your Complete Guide

Discover everything you need to know about junction boxes in our comprehensive guide. Learn what a junction box is, its uses in your electrical system, and why it's crucial.



What is a Junction Box (or jbox)? , Electrical Knowledge

A junction box - also known as an 'electrical box', 'jbox', or 'terminal box' - is a protective box where wires are interconnected. Junction boxes are often built into the plaster of a ...

What Is an Electrical Junction Box and Why Do You Need One?

The electrical junction box, often called a J-box, serves as a fundamental, though often hidden, component in modern wiring systems. Its purpose extends far beyond simply housing wires; it is a ...



Contact Us

For catalog requests, pricing, or partnerships, please visit:
<https://www.peregrine-energy.co.za>

