

PEES Power Systems

**Is it beneficial to install the
solar container communication
station inverter outdoors**



Overview

While most grid-tied inverters are designed for outside installation, they should not be mounted in direct sunlight, as this will degrade their efficiency. In addition to the lost output, the lifetime of the unit is likely to be shortened. When installing, avoid exposing them to excessive sunlight or high temperatures. However, when choosing the optimal location, considerations should include protection, ease of maintenance, and local. While it seems logical to install the converter outdoors, close to the solar panels, the decision warrants some careful consideration. Having the solar inverter as close as possible to the solar panels could potentially increase the power output, establish a more straightforward, less. And when it comes to system performance, reliability, and safety, solar inverter placement can make or break the setup. One of the primary reasons experts stress about.

Is it beneficial to install the solar container communication station in

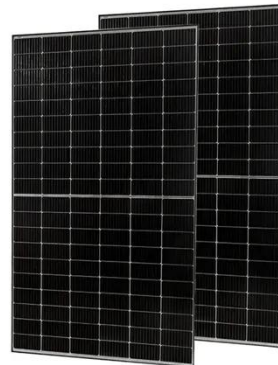


Can an inverter be installed outdoors?

While most grid-tied inverters are designed for outside installation, they should not be mounted in direct sunlight, as this will degrade their efficiency. In addition to the lost output, the lifetime of the unit is ...

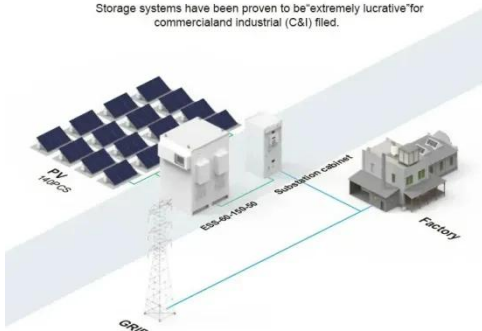
Solar container communication station inverter can be installed

This large-capacity, modular outdoor base station seamlessly integrates photovoltaic, wind power, and energy storage to provide a stable DC48V power supply and optical distribution.



BASIC APPLICATION

Storage systems have been proven to be "extremely lucrative" for commercial and industrial (C&I) filed.



Can Solar Inverters be Installed Outside

In summary, solar inverters can be installed outside to maximize solar energy utilization, optimize space utilization, and provide good heat dissipation and ventilation conditions.

Shipping Container Solar Systems in Remote Locations: An Overview

A shipping container solar system is a modular, portable power station built inside a standard steel container. A Higher Wire system includes solar panels, a lithium iron phosphate ...



Can Solar Inverters Be Installed Outside?

Yes, solar inverters can be installed outside. They are generally weatherproof and built to withstand outdoor conditions. However, it is crucial to protect them from extreme weather and ...

Optimal Solar Inverter Placement for Efficiency & Longevity

Discover expert tips on solar inverter placement to maximize efficiency, lifespan, and safety. Learn optimal locations, clearance, and installation best practices.



 LFP 280Ah C&I

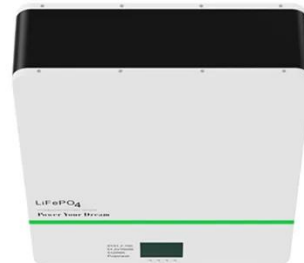
Solar container communication station inverter connected to the grid



What is a solar energy container?
Comprising solar panels, batteries, inverters, and monitoring systems, these containers offer a self-sustaining power solution. Solar Panels: The foundation of solar energy ...

Solar container communication station inverter connected to the ...

These six photovoltaic communication base station projects demonstrate the versatility and adaptability of photovoltaic technology in different environments around the world.



Solar Inverter Installation: Outdoor vs. Indoor

By placing inverters closer to the panels outdoors, energy loss during transmission is minimized, leading to a more efficient and productive solar power system, especially crucial in large ...

Solar Inverters Can Be Installed in These Places Outdoors

Avoid installing the inverter directly on the ground, prevent water immersion, and choose a place that is convenient for maintenance and inspection; use sturdy mounting hardware to fix the ...



IP65/IP55 OUTDOOR CABINET

WATERPROOF OUTDOOR CABINET

42U/27U

OUTDOOR BATTERY CABINET

Contact Us

For catalog requests, pricing, or partnerships, please visit:
<https://www.peregrine-energy.co.za>

