

## PEES Power Systems

# How to estimate the slope of photovoltaic panels



## Overview

---

Free calculator online of the slope or pitch of a roof or photovoltaic solar panels. Use the length and rise of the roof to find the slope, or enter the slope and the run length to get the tilted length. The average roof slope can range between 30° and 40°. Let's explore how. The table below shows the percentage of solar radiation reaching the surface depending on the angle of the panels (vertical axis) and azimuth (horizontal axis). This phenomenon impacts how solar panels' positioning and orientation are adjusted. Our solar panel angle calculator takes the guesswork out of panel positioning, suggesting panel tilt angles based on your location's latitude and your willingness to reposition based on the sun's seasonal dance across the sky.

## How to estimate the slope of photovoltaic panels

---



### Free Solar Roof Pitch Calculator , Measure Roof Angle for Solar Panels

Easily determine your roof's pitch and angle for optimal solar panel installation. Use our free Solar Roof Pitch Calculator to get accurate results in seconds--no complex math required.

### Best Roof Slope for Solar Panels: Optimal Angles and Practical

This guide explains how roof pitch, geographic location, seasonal sun angles, and mounting strategies determine the ideal tilt for photovoltaic (PV) systems in the United States.



✓ TELECOM CABINET

✓ BRAND NEW ORIGINAL

✓ HIGH-EFFICIENCY



### Solar Panel Angle Calculator

Our solar panel angle calculator takes the guesswork out of panel positioning, suggesting panel tilt angles based on your location's latitude and your willingness to reposition based on the sun's ...

## Slope, pitch, gradient of a roof or solar panels (calculator and formula)

Free calculator online of the slope or pitch of a roof or photovoltaic solar panels. Use the length and rise of the roof to find the slope, or enter the slope and the run length to get the tilted length.

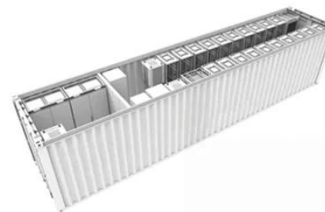


## How to Measure Roof Pitch for Solar Panels

Here are instructions to measure the roof pitch or slope for solar panels. The pitch will impact the amount of tilt toward the Sun for the PV array. Most arrays are flush-mounted, meaning they follow ...

## Solar Panel Angle Calculator

Generate the best tilt for your solar panels with our Solar Panel Angle Calculator for maximum energy efficiency all year round.



## Energy Loss Calculator

In order to analyze the problem, in the EasySolar app, we simulated the yields

from the 15.8 kWp photovoltaic installation, facing south, for different angles of the panels. The results are presented in ...



---

## Roof Pitch for Solar Panels Calculator

For most residential properties, a roof with a slope between 30° and 40° is considered optimal for solar panel installation. This angle allows solar panels to lie flat against the roof without requiring additional ...



---

## Contact Us

For catalog requests, pricing, or partnerships, please visit:  
<https://www.peregrine-energy.co.za>

