

## PEES Power Systems

# How to check the current direction of the battery cabinet

CE UN38.3 



## How to check the current direction of the battery cabinet

---



### homework and exercises

1 I have found that current always is from high voltage end of ...

---

### Direction of Electric Current , Explained with Diagram

The direction of electric current is in the direction of movement of positive charge. Thus, the current in the external circuit flow from the positive terminal to the negative terminal of the battery.



### Simplify Voltage and Current Measurement in Battery Test

...

To charge the battery, the buck converter is enabled while the first-stage voltage Op Amps and current-sense INA are used to measure battery voltage and charging current of the battery ...

## The direction of the electric current , IOPSpark

Scientists agree to use a convention which shows the direction of the electric charge flow (the current) in a circuit as being from the positive terminal of the battery towards the negative ...

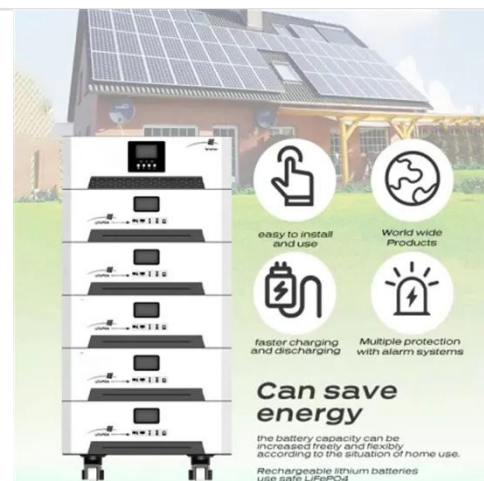


## How to Determine Current Direction in a Multi-Battery Circuit?

The discussion focuses on determining the direction of current in a multi-battery circuit consisting of three batteries (4V, 2V, and 9V) and a resistor. The current flows from right to left ...

## The Mysterious Case of Battery Current: Does it Really Flow ...

Troubleshooting Battery Issues  
Understanding current flow is also critical for troubleshooting battery-related issues. When a battery is malfunctioning, knowing the direction of ...



## Battery Flow Directions: Understanding Current, Electron ...



Understanding battery flow directions plays a significant role in safety and prevention of failures. Mismanagement of current flow can lead to overheating, short circuits, or even fires. Clear ...

---

## homework and exercises

1 I have found that current always is from high voltage end of resistor to the low voltage end. But in battery sometimes it flows from + end of battery to - and mostly from - to +. I can find the ...



---

## How to Check Battery Current with Multimeter? A Simple Guide

Knowing how to check battery current allows for early detection of potential problems, preventing costly repairs or even safety hazards. This knowledge empowers users to take proactive ...

---

## Direction of electric current

The electric current Direction of electric current in a circuit 1) Conventional direction of electric current Outside a

battery or an electric generator, the electric current flows from the negative to the positive ...



### Lithium Solar Generator: \$150



### Circuit Diagram Battery Direction

Creating a functioning circuit with a battery requires careful consideration of the circuit diagram battery direction. Understanding how to wire a battery and its polarity is paramount to ...

## Contact Us

For catalog requests, pricing, or partnerships, please visit:  
<https://www.peregrine-energy.co.za>

