

PEES Power Systems

How much electricity does the energy storage station use



Overview

The average energy consumption of an energy storage station can vary widely based on its size, technology, and operational strategy. A battery energy storage system (BESS) is an electrochemical device that charges (or collects energy) from the grid or a power plant and then discharges that energy at a later time to. Electrical Energy Storage (EES) systems store electricity and convert it back to electrical energy when needed. 1 Batteries are one of the most common forms of electrical energy storage. The first battery, Volta's cell, was developed in 1800. pioneered large-scale energy storage with the. An energy storage system (ESS) for electricity generation uses electricity (or some other energy source, such as solar-thermal energy) to charge an energy storage system or device, which is discharged to supply (generate) electricity when needed at desired levels and quality. Get data-driven insights for industrial and renewable applications.

How much electricity does the energy storage station use

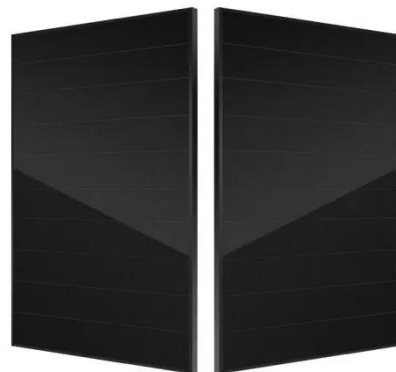


Energy storage for electricity generation

Most of the largest ESSs in the United States use the electric power grid as their charging source. An increasing number of battery ESSs are paired or co-located with a renewable energy facility, which in some ...

Battery energy storage system

As of 2021, the power and capacity of the largest individual battery storage system is an order of magnitude less than that of the largest pumped-storage power plants, the most common form of grid energy storage.



U.S. Grid Energy Storage Factsheet

Energy storage boosts electric grid reliability and lowers costs, 47 as storage technologies become more efficient and economically viable. One study found that the economic value of energy storage in the U.S. is ...

Grid energy storage

Energy from sunlight or other renewable energy is converted to potential energy for storage in devices such as electric batteries. The stored potential energy is later converted to electricity that is added to the power grid, ...



How much electricity can the energy storage station store?

Ultimately, the extent to which energy storage stations can store electricity is contingent upon numerous interconnected factors. These facilities serve as a vital tool in the modern energy landscape, ...

Understanding the Power Capacity of Centralized Energy Storage Stations

In summary, centralized energy storage power stations operate at megawatt scales, adapting to grid and industrial needs. As renewables dominate, these systems aren't just about watts--they're about smarter, ...



How Much Electricity Does an Energy Storage Power Station



...

Energy storage systems (ESS) are revolutionizing how we manage electricity, but a common question persists: "How much power do these stations actually use?" Let's break it down.

How much electricity does the energy storage station consume?

WHAT IS THE AVERAGE ENERGY CONSUMPTION OF AN ENERGY STORAGE STATION? The average energy consumption of an energy storage station can vary widely based on its size, technology, ...



- 50KW/100KWH
- HIGHER POWER OUTPUT IN OFF-GRID MODE
- CONVENIENT OPERATION & MAINTENANCE
- PRE-WIRED

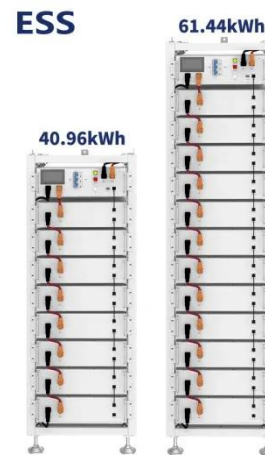


How Grid Energy Storage Works

The economics of grid energy storage are complex but necessary for a more reliable and sustainable energy future, with costs expected to decrease as technology advances and demand for cleaner ...

Grid-Scale Battery Storage: Frequently Asked Questions

A battery energy storage system (BESS) is an electrochemical device that charges (or collects energy) from the grid or a power plant and then discharges that energy at a later time to provide electricity or other grid ...



Battery energy storage system

Overview Construction Safety Operating characteristics Market development and deployment

A battery energy storage system (BESS), battery storage power station, battery energy grid storage (BEGS) or battery grid storage is a type of energy storage technology that uses a group of batteries in the grid to store electrical energy. Battery storage is the fastest responding dispatchable source of power on electric grids, and it is used to stabilise those grids, as battery storage can transition fr...

Contact Us

For catalog requests, pricing, or partnerships, please visit:
<https://www.peregrine-energy.co.za>

