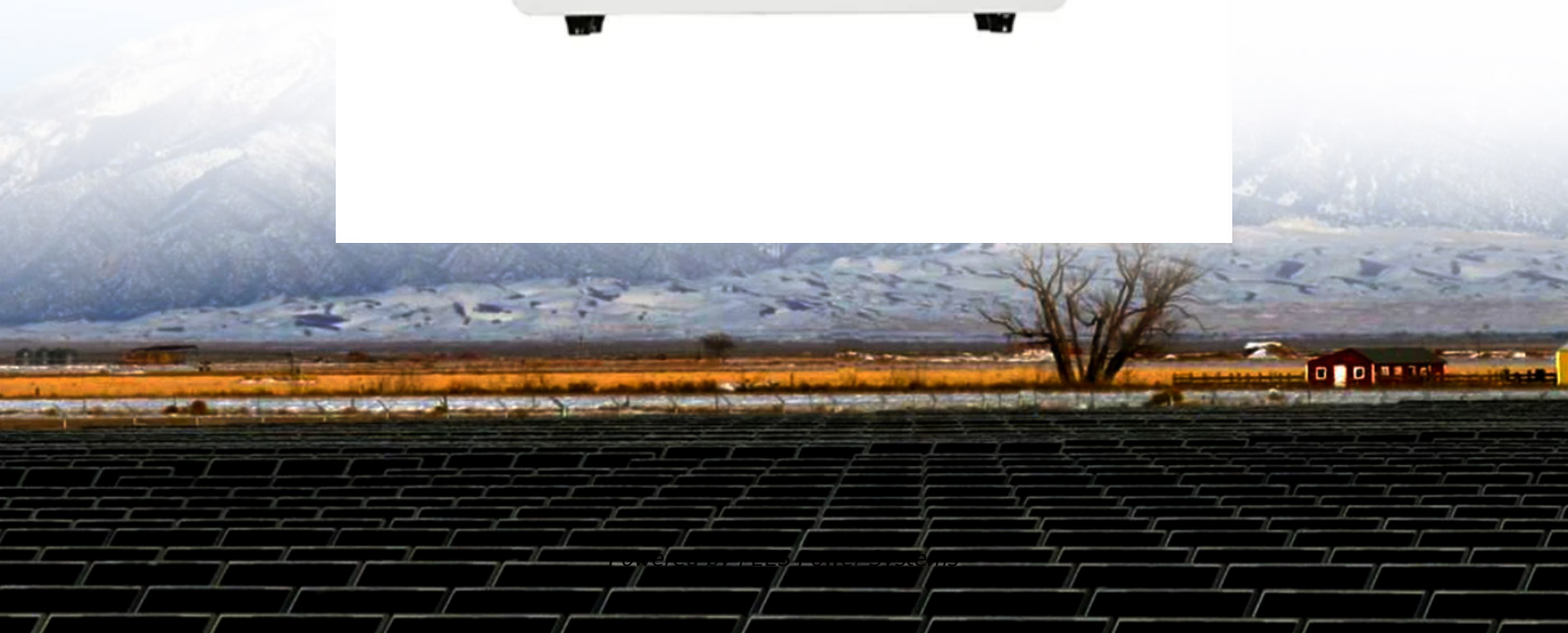


PEES Power Systems

**How many hours does the
backup power supply of a
communication base station
last**



Overview

Most telecommunications facilities have at least eight-hour backup— often required by regulation—but locations prone to lengthy power outages, such as hurricane-prone areas, require backup capability between 24 and 72 hours. The core of a backup power system lies in power supply duration and load matching. According to industry standards, remote mountain sites should be equipped with energy storage batteries that can support at least 8 hours of backup power. 8 Most cable systems provide four to five hours of battery backup in the modem used to provide Voice over. Telecom base station backup batteries are essential for ensuring uninterrupted communication by providing reliable, long-lasting power during outages. Critical aspects include battery chemistry, capacity, cycle life, safety features, thermal management, and intelligent battery management systems. 45V output meets RRU equipment.

How many hours does the backup power supply of a communication

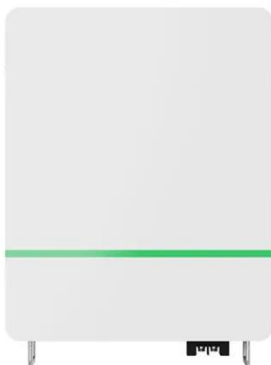
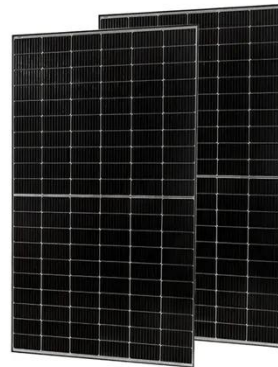


Communication Batteries: Why Telecom Base Stations Have Unique ...

The phrase "communication batteries" is often applied broadly, sometimes including handheld radios, emergency devices, or general-purpose backup batteries. In practice, when ...

Uninterrupted Communication: Complete Backup Power Solutions for

According to industry standards, remote mountain sites should be equipped with energy storage batteries that can support at least 8 hours of backup power. For urban core sites, where loads are ...

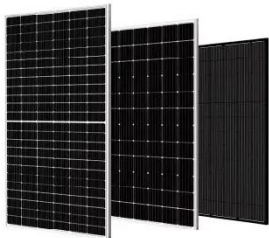


Understanding Backup Battery Requirements for Telecom Base ...

Telecom base stations require reliable backup power to ensure uninterrupted communication services. Selecting the right backup battery is crucial for network stability and efficiency.

Communication Base Station Backup Battery

High-capacity energy storage solutions, specifically designed for communication base stations and weather stations, with strong weather resistance to ensure continuous operation of equipment in ...



Backup power supply of communication base station

Why is backup power important in a 5G base station? With the rapid expansion of 5G networks and the continuous upgrade of global communication infrastructure, the reliability and stability of telecom ...

Fuel Cells for Backup Power in Telecommunications Facilities

Most telecommunications facilities have at least eight-hour backup-- often required by regulation--but locations prone to lengthy power outages, such as hurricane-prone areas, require backup capability ...



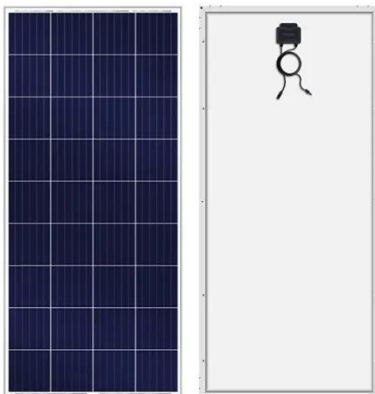
D0809014 Addressing Standards for Telecommunications Backup ...

Most, but not all, broadband service providers provide backup at the customer's premises. Four to 20 hours of battery backup were typically cited by parties.



Communication Base Station Backup Duration , Huijue Group E-Site

Huijue Group's new EdgePower Suite uses quantum-inspired algorithms to predict backup failures 14 days in advance. Early adopters in Vietnam report 22% longer backup duration through dynamic load ...



Communication Base Station Backup Power Selection Guide

Choosing the appropriate standby power supply is very important for the stable operation of the communication base station. This article will introduce how to select an appropriate backup ...

What Are the Critical Aspects of Telecom Base Station Backup ...

Telecom base station backup batteries are essential for ensuring uninterrupted communication by providing reliable, long-lasting power during outages. Critical aspects include battery chemistry, ...



Contact Us

For catalog requests, pricing, or partnerships, please visit:
<https://www.peregrine-energy.co.za>

