

PEES Power Systems

How many ampere-hours does a 50w solar panel have



Overview

A 50W solar panel can produce 4 amps per hour, so that is 20ah in 5 hours of sunlight. A fully charged 20ah battery can power small appliances, a laptop, mobile devices etc. Definition: This calculator converts watt hours to amp hours using the system voltage, helping determine battery capacity needs for solar systems. Purpose: It helps solar energy users and installers properly size batteries and understand energy storage requirements. How Does the Calculator Work?

. Under ideal conditions (typically known as standard test conditions - STC) a 12v 50 watt solar panel will produce 50 watts of DC power output with 18. But. 1 Amp AC = 10 Amps DC. (example, 2AC amps =20DC amp) Add 10% (22 amps) DC amps x 12v = DC watts. (22 x12 =264 watts) 264 would be entered in field # 3 Fields #6 and #12 are for how many hours you expect your equipment to run in a 24 hour period, and your input voltage (12, 24, 36?

). 16 amps, given optimal conditions. What is the Best Battery for a 50W Solar Panel?

A 50W solar panel can produce up to 300 watts with six sun hours, so the. Amps production is based on the voltage and wattage of the panel Solar energy systems rely on three key electrical parameters: wattage, voltage, and amperage. The relationship between them is simple and fundamental. (Batterystuff) This formula.

How many ampere-hours does a 50w solar panel have

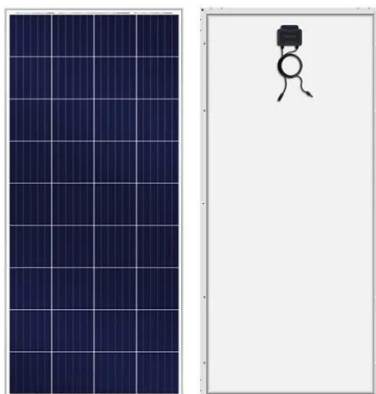


50 Watt Solar Panels Technical Specs & Installation

A 50-watt solar panel might have three amps (Isc) and 2.78 amps (Imp). Like the voltage, the amperage of a panel can vary between manufacturers, so be sure to research or consult a ...

How Many Batteries Can a 50W Solar Panel Charge?

A 50W solar panel can produce 4 amps per hour, so that is 20ah in 5 hours of sunlight. A fully charged 20ah battery can power small appliances, a laptop, mobile devices etc.



How many Amps does a solar panel produce?

Solar energy systems rely on three key electrical parameters: wattage, voltage, and amperage. The relationship between them is simple and fundamental. You calculate amperage by ...

How Many Amps Does a Solar

Panel Produce? Power Output Guide

The amount of amps a solar panel produces is determined by the panel's wattage and voltage. On average, a typical solar panel generates 6 to 9 amps, but this can vary depending on ...



How many amps does a 12v50w solar panel have , NenPower

A solar panel rated at 50 watts operating at 12 volts generally provides approximately 4.17 amps under ideal conditions. This value is obtained by dividing the wattage (50) by the voltage (12).

How many amps is a 50w solar cell?

Solar energy systems, including 50-watt solar cells, represent a compelling opportunity for sustainable energy generation. This specific solar cell can approximately produce around 4.16 ...



Solar Panel Amp Hour Calculator



What is a Solar Panel Amp Hour Calculator? Definition: This calculator converts watt hours to amp hours using the system voltage, helping determine battery capacity needs for solar systems.

Solar Panel Amps Calculator

To calculate solar panel amperage, identify their rated power output in watts, which serves as a comparison of their electricity-generating potential. The panel's operating voltage is key ...



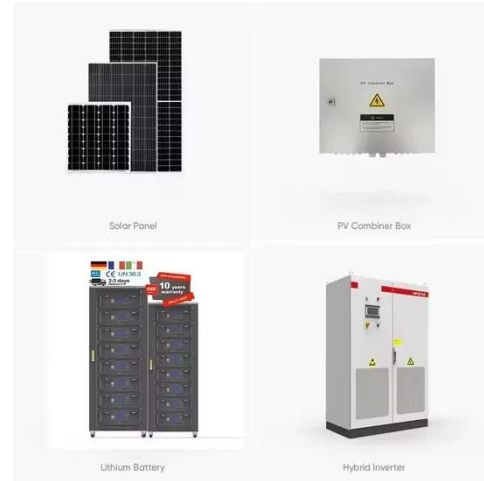
50 watt Solar Panel: The Ultimate Guide (What Can It Power?)

Calculate how many solar panels you need with this solar calculator. Great for estimating the solar panels needed for a solar array project.

Solar Panel Calculator , BatteryStuff

Calculate how many solar panels you need with this solar calculator. Great for estimating the solar panels needed for a

solar array project.



50 watt Solar Panel: The Ultimate Guide (What Can It Power?)

In the real world, on average, a 50-watt solar panel will produce about 200 watts of DC power output or 16 amps @ 12 volts per day. Considering 5 hours of peak sunlight.

Contact Us

For catalog requests, pricing, or partnerships, please visit:

<https://www.peregrine-energy.co.za>

