

## PEES Power Systems

# How big is a 144 watt solar panel

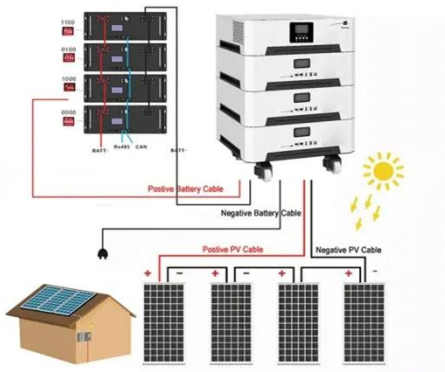


## Overview

---

The overall panel size remains similar; for instance, a 144 half-cut cell panel will still be about 2 m x 1 m if it's based on the 72-cell format. If you have a 1000 sq ft roof, and you can use 75% of that roof area for solar panels, you can theoretically put 34 400-watt solar panels on a 1000 sq ft roof. 5 feet wide and weigh between 40 to 50 pounds. Understanding these specifications is crucial for determining roof. Solar panel size is measured in watts (W) and indicates how much electricity the panel can produce under standard test conditions. Here's the key distinction every homeowner should understand: Most residential solar panels in 2025 come in three main configurations: The most common choice for. One PV module is 71. The whole system is going to take about 360 square feet to build. We would need 16 panels for 7kW PV. It's worth noting that modern solar panels often use half-cut cells (better efficiency as compared to traditional full-cut cells), so you might see specifications like 120 cells or 144 cells. It is determined by factors such as voltage, amperage, and number of cells. Typically, lower-wattage panels are more compact and portable, whereas the higher-wattage ones are often larger and.

## How big is a 144 watt solar panel



### Standard Solar Panel Sizes And Wattages (100W-500W Dimensions)

To bridge that gap of very useful knowledge needed, we have compared and averaged the sizes of 100-watt to 500-watt solar panels available on the market. The goal here is to get to the average solar ...

### Solar Panel Size & Dimensions Guide 2025 , Complete Specs

In this comprehensive guide, you'll learn everything you need to know about solar panel sizing, from standard dimensions to weight considerations, helping you determine the perfect solar ...



### Solar Panel Size and Wattage Guide: What Works Best for Homes

High-quality residential solar installations in the US typically utilize solar panels rated between 250W and 430W. As solar panels get more efficient and produce more electricity, 350W is a ...

## Solar Panel Size Guide , Best Panel Size for Your Roof

Learn how to choose the ideal solar panel size for your home. Get expert tips, standard dimensions, and a size chart to simplify your solar decisions.



## Solar Panel Size Guide (with 4 Charts)

Many portable solar panels for RV are in the 100 to 300 watt range. The physical size of the panels often correlate to the watts, the bigger the panels the more watts it can generate. Here are the sizes for ...

## Complete Guide to Solar Panel Size

Panels with 120 half-cut cells are effectively the same size as 60-cell panels. In contrast, 144-cell panels are similar to 72-cell panels. 60-cell panels are generally around 65 inches x 39 inches. In ...



## Solar panel size range: From tiny to large

The size of a commercial solar panel



depends on its wattage and number of cells -- these are 72/144-cell panels and larger. For instance, 144-cell 500W panels are about 40 × 90 ...

---

## The Ultimate Guide to Solar Panel Size, Weight & Wattage (2025)

Find the exact solar panel size & weight in our 2025 guide. Our complete chart compares models by ft/cm and lbs/kg to help you plan your installation.



---

## Solar Panel Sizes and Wattage Explained

Depending on manufacturer and type, these dimensions are usually available in millimetres which can be easily converted to centimetres or meters. For example, a standard PV ...



---

## Solar Panel Dimensions and Weight: A Complete Guide , Angi

Most homes use anywhere from 15 to 34

solar panels, each emitting 250 to 350 watts of electricity per hour in ideal conditions. The output does depend on the efficiency of the solar panel. ...



---

## Contact Us

---

For catalog requests, pricing, or partnerships, please visit:  
<https://www.peregrine-energy.co.za>

