

PEES Power Systems

How big an inverter should I use for two photovoltaic panels



Overview

Your solar inverter should have a similar or slightly higher wattage rating than the DC output of your solar panels (which in this case is 4. The rule of thumb is to size your inverter 1. Choosing the right solar inverter size is critical—and one of the most common questions: what solar inverter size do I need?

Whether you are installing a rooftop system in California, powering a remote cabin in Alberta, or sizing for a community center in Rajasthan, getting it right means. Your inverter size should match your solar array's capacity, not your electricity bill. This means your inverter doesn't need to power your entire home—it just converts whatever your panels generate.

How big an inverter should I use for two photovoltaic panels

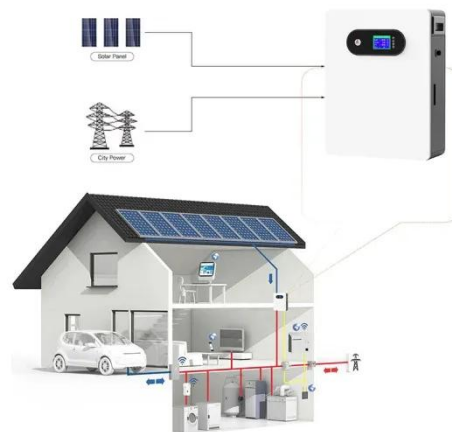


Solar Inverter Sizing Guide: How to Size Your Inverter

Learn how to properly size your solar inverter with our complete guide. Discover the optimal DC-to-AC ratio and avoid costly sizing mistakes.

Complete Solar Inverter Sizing Guide

Solar inverter sizing made simple with clear steps for calculating load demand and matching inverter capacity to solar panels.



What Size Solar Inverter Do I Need? Experts Break It Down

Here's the cheat code: your inverter size should match your solar panel output. If your system pushes 5,000 watts, a 5,000-watt (or 5 kW) inverter is usually the move.

How To Size A Solar Inverter in

3 Easy Steps

We explain the key concepts that determine solar inverter sizing including your power needs, the type and number of solar panels you need, and the length of your wires.



What Size Solar Inverter Do You Need for Solar Panels? Explained

Ideally, the inverter's capacity should match the DC rating of your solar array. For example, a 5 kW solar array typically requires a 5 kW inverter. However, factors like derating, future expansion plans, and ...

Solar inverter sizing: Choose the right size inverter

Most PV systems don't regularly produce at their nameplate capacity, so choosing an inverter that's around 80 percent lower capacity than the PV system's nameplate output is ideal.



How Many Inverters Do You Need for Your Solar System?

In this article we'll dive deep into the world of inverter sizing, explore how many panels you can connect to one inverter, why the design matters, and how the choice of a solar inverter affects cost, ...



How to Choose the Right Size Solar Inverter: Step-by-Step with Real

This guide walks you through calculating inverter size based on panel capacity, power usage, and safety margins. We use real examples from installations in Texas and Queensland to explain how inverter ...



Perfectly Size Your Inverter for Peak Output

Most solar professionals recommend sizing your inverter for solar panels between 75% and 115% of your total panel wattage, with the sweet spot around 1:1.15 --meaning your inverter is slightly smaller ...

Inverter Size Calculator - self2solar

Determining the correct inverter size depends on your solar array's capacity and your household's power needs. Generally, the inverter should be sized to match about 80-100% of your system's

...



Contact Us

For catalog requests, pricing, or partnerships, please visit:
<https://www.peregrine-energy.co.za>

