

## PEES Power Systems

# Horizontal row size of photovoltaic panels



## Overview

---

Using this calculator, you can determine the ideal distance between rows based on your location, panel tilt, height, and seasonal sun position, ensuring your solar array performs at its best all year round. Several critical factors affect how far apart solar panel rows. To prevent shading, you must calculate the correct solar panel inter-row spacing based on your site's latitude, tilt angle, and azimuth. However, it is essential to do it right the first time to avoid accidental shading from the modules ahead of each row. The size of a solar panel is mainly determined by the number of cells, encapsulation. To estimate how many panels can fit on a roof, you must consider not only the panel dimensions but also the required spacing between panels and rows. For example, a panel measuring 2. At 40-46 pounds, they can be safely handled by.

## Horizontal row size of photovoltaic panels

---

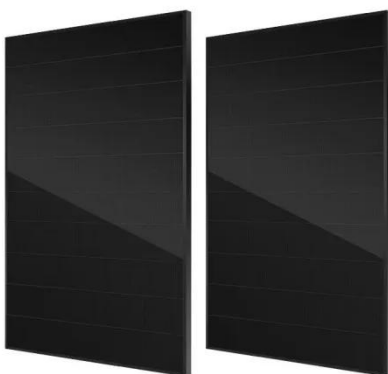
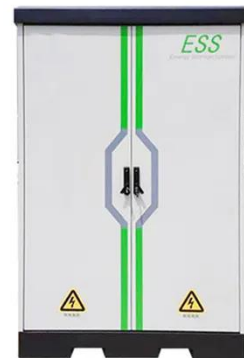


### How to Calculate Solar Panel Row Spacing for Maximum Efficiency

Calculate accurate solar panel row spacing with our easy-to-use tool. Avoid shading and optimize performance.

### Rooftop Solar PV Design Guide: Tilt Angle, Row Spacing, and Bifacial

Complete guide to rooftop solar PV design: tilt angles, row spacing, bifacial panels, shading control, and layout tips for flat roof systems.



### Inter-Row Spacing in the Rooftop Solar Projects

On entering the desired panel make, mount height, and tilt, the design studio automatically estimates the required row spacing. Further, there are also various solar roof spacing calculators available on the ...

## PV Row to Row Spacing

To determine the correct row-to-row spacing, refer to the figure above. There is no single correct answer since the solar elevation starts at zero in the morning and ends at zero in the evening.



## Solar Panel Size & Dimensions Guide 2025 , Complete Specs

In this comprehensive guide, you'll learn everything you need to know about solar panel sizing, from standard dimensions to weight considerations, helping you determine the perfect solar ...

## Photovoltaic Array Row Spacing Calculator

The row spacing of a photovoltaic array is the distance between the front and rear rows of solar panels. This spacing is calculated to ensure that the rear panels are not shaded by the front panels, ...



## Rooftop Solar Panel Size and Layout Guide

This article, based on practical case studies and calculation formulas, analyzes solar panel dimensions,

spacing, and rooftop assessment methods to help distributors and users select ...



## Optimal Solar Panel Row Spacing Calculator , SolarMathLab

Using this calculator, you can determine the ideal distance between rows based on your location, panel tilt, height, and seasonal sun position, ensuring your solar array performs at its best all year round.



## Experimental and numerical study of optimizing thermal and electrical

For PV arrays horizontally installed on the building rooftops or on the ground, layout parameters of PV array inter-row spacing, tilt angle and mounting height can impact their ...

## Determining Module Inter-Row Spacing , Greentech

## Renewables

When designing a PV system that is tilted or ground mounted, determining the appropriate spacing between each row can be troublesome or a downright migraine in the making. However, it is ...

### Support Customized Product



## Contact Us

For catalog requests, pricing, or partnerships, please visit:  
<https://www.peregrine-energy.co.za>

