

PEES Power Systems

Energy storage system pre-delivery test



Overview

Factory Acceptance Testing (FAT) is a critical step in the Battery Energy Storage System (BESS) procurement process, ensuring that the system meets technical specifications, safety standards, and performance requirements before shipment. FAT reduces risks, identifies potential issues, and confirms. This report of the Energy Storage Partnership is prepared by the National Renewable Energy Laboratory (NREL) in collaboration with the World Bank Energy Sector Management Assistance Program (ESMAP), the Faraday Institute, and the Belgian Energy Research Alliance. Department of Energy (DOE) Federal Energy Management Program (FEMP) and others can employ to evaluate performance of deployed BESS or solar photovoltaic (PV) +BESS systems. In this article, we delve into a comprehensive energy storage battery's 16-point pre-shipment. For distributors, EPCs, and system integrators sourcing energy storage systems (ESS) from China, ensuring that every shipment leaves the factory in perfect condition is critical. A well-prepared pre-shipment checklist prevents costly delays, hidden defects, or rework during installation.

Energy storage system pre-delivery test



BESS Factory Acceptance Testing Procurement Checklist

Factory Acceptance Testing (FAT) is a critical step in the Battery Energy Storage System (BESS) procurement process, ensuring that the system meets technical specifications, safety standards, and ...

Energy Storage System Testing and Certification

We conduct custom research to help identify and address the unique performance and safety issues associated with large energy storage systems.



Standard methods for energy storage testing

This section of the report discusses the architecture of testing/protocols/facilities that are needed to support energy storage from lab (readiness assessment of pre-market systems) to grid

Energy Storage System Performance Testing

This paper contains an overview of the system architecture and the components that comprise the system, practical considerations for testing a wide variety of energy storage technology, as well as a ...



Checklist Before Shipping Your Energy Storage System

This guide outlines the essential quality control (QC), documentation, and logistics checks every buyer should complete before their ESS is shipped -- whether it's a single hybrid inverter or a



Energy Storage Battery Pre-Shipment Test List

In this article, we delve into a comprehensive energy storage battery's 16-point pre-shipment test list, explaining the importance of each test and how it safeguards the interests of both installers and end ...



Battery Energy Storage System Evaluation Method

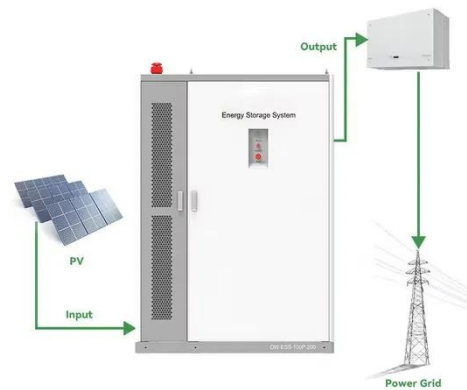
This report describes development of an



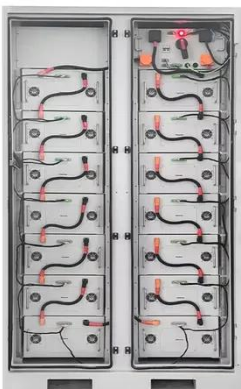
effort to assess Battery Energy Storage System (BESS) performance that the U.S. Department of Energy (DOE) Federal Energy Management Program ...

Battery Energy Storage System Inspection and Testing Checklists

These Checklists provide information on the Inspection and Testing activities to be carried out by the Applicant contractor at the end of the construction of a BESS, in order to connect it to the Distribution ...



To Strive forward No Energy Waste



- ✓ All in one
- ✓ 100~215kWh High-capacity
- ✓ Intelligent Integration

Global Overview of Energy Storage Performance Test Protocols

One of the Energy Storage Partnership partners in this working group, the National Renewable Energy Laboratory, has moved forward to collect and analyze information about the existing energy storage ...

Battery Energy Storage System

(BESS) Commissioning and ...

Acelerex provides Commissioning and Testing Software and Appliances and is deployable in the cloud and on appliances for testing and commissioning of assets such as energy storage systems, ...



Contact Us

For catalog requests, pricing, or partnerships, please visit:
<https://www.peregrine-energy.co.za>

