

## PEES Power Systems

# Does the orientation of solar panels affect voltage



## Does the orientation of solar panels affect voltage

---

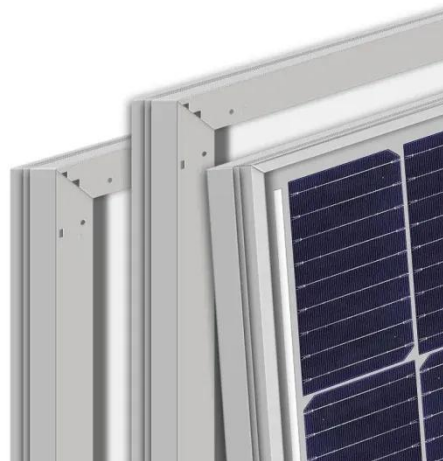


### Solar panel orientation

These panels collect more energy when they face due south, but the energy is more useful if it comes later in the day. This turn allows the solar panels to produce more electricity at the hours when it is ...

### Solar Panel Orientation and Tilt

When panels face the sun optimally and have the right tilt angle, they capture more sunlight, resulting in higher electricity generation. This heightened energy production reduces reliance on conventional ...



### Effect of tilt angle on the performance and electrical parameters of a

Photovoltaic (PV) system's performance is significantly affected by its orientation and tilt angle. Experimental investigation (indoor and outdoor) has been carried out to trace the variation in ...



## Solar Panel Angle and Performance: Why Tilt and Direction Matter

A perfectly calculated solar panel angle and direction will help in improving sunlight capture, battery charging, and less dependence on the grid.



## What's the Best Angle for Solar Panels? , EnergySage

South-facing solar panel systems almost always generate the most electricity, but east-west roofs can work well for solar, too. The direction is more important than the angle. Angle is rarely ...

## Solar panel inclination angle, location and orientation

The optimal tilt angle of photovoltaic solar panels is that the surface of the solar panel faces the Sun perpendicularly. However, the angle of incidence of solar radiation varies during the ...



## Solar Panel Direction & Orientation: 2025 Complete Guide



Discover the optimal direction and angle for solar panels to maximize energy output. Complete guide with calculations, tools, and location-specific recommendations for 2025.

## Solar Panel Placement: How Shade and Orientation Affect Energy ...

Even small changes in where you place panels can greatly affect how much energy they produce. And panels not placed perfectly can lose up to 20% of their power. On the contrary, when ...



## Solar Panel Orientation: Does It Really Affect Performance?

One of the most significant factors influencing solar panel performance is orientation. Whether you're installing panels on your rooftop, a ground-mounted system, or a commercial building, their direction ...

## Orientation and Tilt of Solar Panels - How They Affect Performance

If your solar panels are poorly oriented or set at the wrong tilt, the losses can be substantial. For example, panels facing directly east or west instead of south may lose 10% to 20% ...



---

## Contact Us

For catalog requests, pricing, or partnerships, please visit:  
<https://www.peregrine-energy.co.za>

