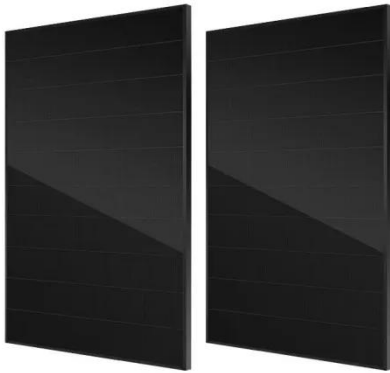


PEES Power Systems

Distance between photovoltaic panels and buildings



Distance between photovoltaic panels and buildings



Precautions for the distance between solar panels and surrounding buildings

Consider the actual situation: When determining the distance between the solar panels and the surrounding buildings, the actual situation also needs to be taken into consideration. For example, if the surrounding ...

How Far Can Solar Panels Be From House?

Factors Influencing the Distance Between Solar Panels and the House
 Several factors can affect the optimal placement of solar panels: Site Layout and Sun Exposure: The location should have maximum ...



How to Calculate the Minimum Distance Between PV Panels?

Understand the importance of minimum installation distance for solar panels, calculation methods, and relevant regulations to ensure efficient operation and compliance of solar energy systems.

APPLICATION SCENARIOS

Shade Calculator

Use our calculator to find out suggested minimum distance between photovoltaic panels Easy Solar - Software for PV design & selling ?



Solar photovoltaic panel installation distance

What is solar panel spacing? At its core, understanding solar panel spacing is about grasping the balance between maximizing energy absorption and minimizing shading losses. The spacing between panels ...

Distance Between Solar Panels and House: What You Need to ...

...

People ask if panels can sit far from the house. Costs rise and efficiency drops with distance. I use clear rules from hundreds of ADNLITE projects. Technically, panels can be tens or even hundreds of meters away. ...



Calculation of the spacing between photovoltaic panels



The separation between rows of PV panels must guarantee the non-superposition of shadows between the rows of panels during the winter or summer solstice months. We can calculate this distance ...

How to Calculate the Minimum Distance Between PV Panels?

What is the minimum distance required between rows of PV panels? This spacing is not just about aesthetics or layout -- it directly affects energy output, system efficiency, and return on investment. ...



Photovoltaic panel construction spacing specifications

Distance requirements for solar panels from boundaries include: A minimum distance of 3 meters between adjacent buildings. A minimum distance of 10 meters between opposing building walls and windows ...

Distance Limitations for Solar Panels: A ...

Comprehensive analysis of solar panel distance limits: Learn wiring impacts, efficiency tips, and installation strategies for optimal energy output.



Contact Us

For catalog requests, pricing, or partnerships, please visit:
<https://www.peregrine-energy.co.za>

