

PEES Power Systems

Direct electricity consumption by energy storage power station



Direct electricity consumption by energy storage power station

12.8V 100Ah

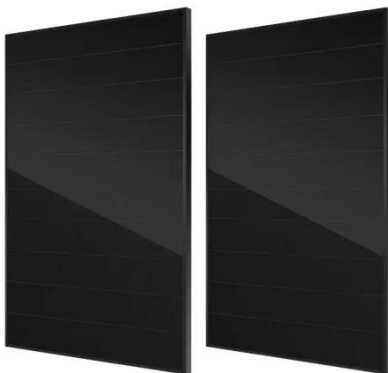


Electricity Storage , US EPA

The average energy consumption of an energy storage station can vary widely based on its size, technology, and operational strategy. On average, ...

AN INTRODUCTION TO BATTERY ENERGY STORAGE ...

With a bidirectional power conversion system (PCS), BESS can charge and discharge electricity to and from the energy grid. Before the AC power from the PCS can be transmitted into the grid, the output ...



How Much Electricity Does an Energy Storage Power Station ...

Energy storage systems (ESS) are revolutionizing how we manage electricity, but a common question persists: "How much power do these stations actually use?" Let's break it down.

Energy storage for electricity generation

Pairing or co-locating an on-grid ESS with wind and solar energy power plants can allow those power plants to respond to supply requests (dispatch calls) from electric grid operators when direct ...



Comprehensive review of energy storage systems technologies, ...

Firstly, it reduces electricity use, as energy is stored during off-peak times and used during on-peak times. Thus improving the efficiency and reliability of the system. Secondly, it reduces the ...

Energy Storage Power Stations: Direct Consumption for a Sustainable

The ability for energy storage power stations to directly consume renewable energy marks a paradigm shift in power management. From stabilizing grids to enabling industrial decarbonization, this ...



Electricity explained Electricity generation, capacity, and sales



in

Energy storage systems for electricity generation have negative-net generation because they use more energy to charge the storage system than the storage system generates.

U.S. Grid Energy Storage Factsheet

Electrical Energy Storage (EES) systems store electricity and convert it back to electrical energy when needed. 1 Batteries are one of the most common forms of electrical energy storage.



How much electricity does the energy storage station consume?

The average energy consumption of an energy storage station can vary widely based on its size, technology, and operational strategy. On average, a utility-scale lithium-ion storage facility ...

Electricity Storage , US EPA

Electricity can be used to produce thermal energy, which can be stored

until it is needed. For example, electricity can be used to produce chilled water or ice during times of low demand and ...



Study on the optimal daily operating cost of electricity consumption

Shared energy storage is an innovative solution for managing electrical resources. It releases stored electricity during peak demand to balance supply and demand.

Contact Us

For catalog requests, pricing, or partnerships, please visit:
<https://www.peregrine-energy.co.za>

