

PEES Power Systems

DC screen inverter structure



Overview

The basic components of a laptop inverter consist of a transformer, capacitors, diodes, and transistors. Each component plays a crucial role in converting DC power from the laptop's battery or power supply into AC power for the display. It consists of semiconductor power. The inverter device's role is to control the voltage and frequency of the power supply and seamlessly change the rotation speed of motors used in home appliances and industrial machineries.

DC screen inverter structure



Inverter Circuit of LCD TV and Monitors

A simple inverter topology that could optimize performance, reduce component count, and lower costs implements a Direct Drive architecture that eliminates the inductor and resonant ...

Circuit Diagram For Inverter Design

That's the job of the inverter - to transform the DC's constant current into the AC's oscillating rhythm. This transformation isn't magic; it's meticulously engineered, guided by a precise circuit diagram.



What Is LCD Display Inverter?

An LCD display inverter is an electronic circuit or device that converts low-voltage direct current (DC) into the high-voltage alternating current (AC) required to power the backlight of an LCD ...

Understanding the Functionality of an LCD Inverter Board Diagram

Learn about the LCD inverter board diagram, how it functions and its components. Discover the importance of the inverter board in LCD displays and how it affects the backlighting of the screen.



How Do Laptop Inverters Work: A Comprehensive Explanation

The basic components of a laptop inverter consist of a transformer, capacitors, diodes, and transistors. Each component plays a crucial role in converting DC power from the laptop's ...

Simplifying the Complex: Understanding the Schematic of an Inverter

A schematic of an inverter and its components. Understand how an inverter works and how it converts direct current (DC) into alternating current (AC) through different stages. Learn about the main ...

Lithium battery parameters

Product capacity: 100Ah

Product size: 135*197*35mm

Product weight: 1.82kg

Product voltage: 3.2V

internal resistance: within 0.5



LCD Inverter Repair Guide

In simple terms, an LCD inverter takes



the direct current (DC) power from the device's battery or power supply and converts it into the alternating current (AC) power needed to light up the ...

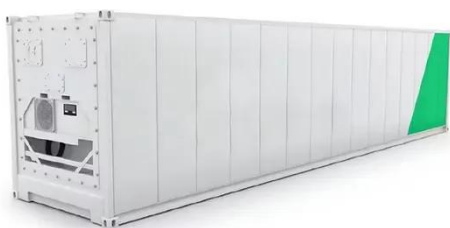
Introduction to inverters: structure, operating principles and

What is an inverter? An inverter is a converter that converts DC power (from a battery or storage battery) into fixed-frequency, constant-voltage, or frequency-regulated and voltage-regulated ...



Nouakchott DC screen inverter structure

In simple terms, an LCD inverter takes the direct current (DC) power from the device's battery or power supply and converts it into the alternating current (AC) power needed to light up the screen's backlight.



How does an inverter work?

The inverter circuit then outputs

alternating current with varying voltage and frequency. The DC/AC conversion mechanism switches power transistors such as "IGBT (Insulated Gate Bipolar ...



Contact Us

For catalog requests, pricing, or partnerships, please visit:
<https://www.peregrine-energy.co.za>

