

PEES Power Systems

Construction of battery cells for telecommunication base stations in Greece



Overview

This guide outlines the design considerations for a 48V 100Ah LiFePO4 battery pack, highlighting its technical advantages, key design elements, and applications in telecom base stations. Why Choose LiFePO4 Batteries?

. What makes a telecom battery pack compatible with a base station?

Compatibility and Installation Voltage Compatibility: 48V is the standard voltage for telecom base stations, so the battery pack's output voltage must align with base station equipment requirements. Modular Design: A modular. This paper aims to consolidate the work carried out in making base station (BS) green and energy efficient by integrating renewable energy sources (RES). [pdf] [FAQS about Which Type of Lead-Acid Battery is Best for.

Construction of battery cells for telecommunication base stations in

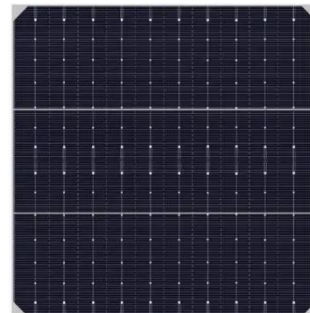


Network communication base station battery construction project

Among various battery technologies, Lithium Iron Phosphate (LiFePO₄) batteries stand out as the ideal choice for telecom base station backup power due to their high safety, long lifespan, and excellent ...

BATTERY TECHNOLOGY FOR COMMUNICATION BASE STATIONS

Rack lithium battery solutions for telecom base stations provide high-density, scalable energy storage designed for 24/7 operational reliability. These systems use LiFePO₄ or NMC cells, offering 5,000+ ...



(PDF) Design considerations for a PV-diesel hybrid system powering

Using information regarding the load profile of a typical Telecommunication Base Station (TBS) a preliminary design approach based on simulated data, using software HOMER, as well as PVSYST ...



Communication Base Station Backup Power LiFePO4 Supplier , Grepow

Why Lifepo4 Battery as A Backup Power Supply For The Communications Industry?The Lifepo4 Battery Manufacturer of For Communication Backup PowerWhy Choose Grepow Custom Communications Backup Power?1. Grepow high C-rate LiFePO4 battery has a higher discharge efficiency, explosive enough, and has better temperature stability and resistance. 2. Grepow LiFePO4 cells using the stacking process, the internal resistance is smaller, with a better voltage working platform. 3. Grepow LiFePO4 battery is with discharge rate to meet the highest instantan See more on [grepow institut3i \[PDF\]](#)



Network communication base station battery construction project

Among various battery technologies, Lithium Iron Phosphate (LiFePO4)

batteries stand out as the ideal choice for telecom base station backup power due to their high safety, long lifespan, and excellent ...



Battery for Telecom Base Station Market

The global shift toward renewable energy integration and network reliability is driving accelerated deployment of telecom base station batteries across multiple emerging markets.

Construction of battery equipment for communication base stations

Selection and maintenance of batteries for communication base stations This paper focuses on the engineering application of battery in the power supply system of communication base stations, and ...



Telecom Base Station Backup Power Solution: Design Guide for 48V ...

This guide outlines the design considerations for a 48V 100Ah LiFePO4 battery pack, highlighting its technical advantages, key design elements, and

applications in telecom base stations.



Communication Base Station Backup Power LiFePO4 Supplier , Grepow

In addition to the production of LFP cells, Grepow also provides integrated battery system customization services of LiFePO4 cells + battery management system (BMS) + structural ...



Greek communication base station battery construction

Get Price PPC kicks off construction of 98 MW of battery storage in Greece Greek power utility PPC SA (ATH:PPC) has announced the start of construction works on two battery energy storage systems ...

Optimum sizing and configuration of electrical system for

This study develops a mathematical model and investigates an optimization approach for optimal sizing and deployment of solar photovoltaic (PV), battery bank storage and a diesel ...



Construction of battery cells for telecommunication base stations in ...

A telecom battery backup system is a comprehensive portfolio of energy storage batteries used as backup power for base stations to ensure a reliable and stable power supply.

Contact Us

For catalog requests, pricing, or partnerships, please visit:
<https://www.peregrine-energy.co.za>

