

PEES Power Systems

Can the Belmopan inverter 12v be used



Overview

In conclusion, a 12v inverter can be used for power tools, but it has its limitations. A 12v inverter is a device that converts the 12 - volt direct current (DC) power, usually from a car battery or a deep - cycle battery, into 110 - volt or 220 - volt alternating current (AC) power. This allows you to use regular household appliances or power tools in places where there's no access. Yep, that's right, with a 12V inverter, you can bring that AC convenience to various DC-powered environments. Here are a few examples to tickle your imagination. Electronics Charge your laptop, power up your desktop computer, or keep your smartphones and tablets juiced up. It depends on the inverter's wattage and surge capacity. Always follow safety guidelines. Inverters have become increasingly popular over the past decade, allowing motorhome, campervan, caravan. Once installed they are generally very easy use, with a simple on/off switch with one or two power points for you to plug your appliance into.

Can the Belmopan inverter 12v be used

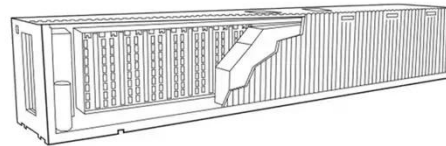


Belmopan Energy Storage Battery 12V: A Comprehensive Guide for ...

The Belmopan Energy Storage Battery 12V bridges affordability with high performance, making it ideal for hybrid systems and off-grid applications. With advancements in thermal management and cycle ...

Best Sized Inverter For 12 Volt Battery [Updated On: February 2026]

For a 12-volt battery, the inverter must be compatible with this voltage. The chosen inverter should convert the battery's direct current (DC) to alternating current (AC) used by most appliances.



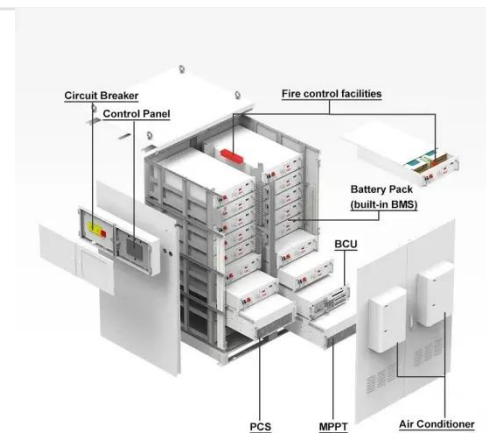
What Can You Run Off A 12V Inverter?

Yep, that's right, with a 12V inverter, you can bring that AC convenience to various DC-powered environments. Here are a few examples to tickle your imagination.



Can a 12V Inverter Run a TV, Fridge, or Other Household Devices?

So, can a 12V Inverter run your TV, fridge, or other household gadgets? Absolutely--if you pick an inverter with enough wattage and surge capacity, maintain a healthy battery bank, and pay ...



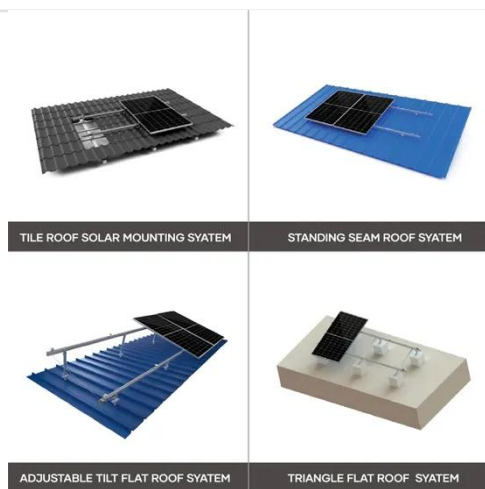
Frequently Asked Questions About Power Inverters , DonRowe

You just connect the inverter to a battery, and plug your AC devices into the inverter and you've got portable power whenever and wherever you need it. The inverter draws its power from a 12 Volt ...

Can a 12v inverter be used for

power tools?

In conclusion, a 12v inverter can be used for power tools, but it has its limitations. You need to carefully consider the power requirements of the tools, the starting surge, the battery ...



Upgrading to LiFePO4 & 3500W inverter on 12V

The camper's 12-volt devices consume up to 10 amps intermittently. If the AC were to run continuously, the fully charged batteries should hit the low voltage disconnect in about 3.5 hours.

What Can a 12V 3000W Inverter Run?

In this article, we will provide you with a comprehensive guide on what a 12V 3000 watt inverter can run. From common household appliances to power tools and recreational equipment, ...



Inverters Guide

High quality inverters can be quite efficient but it still needs to be taken into account when thinking about how long your battery will supply power to the

inverter.



Contact Us

For catalog requests, pricing, or partnerships, please visit:
<https://www.peregrine-energy.co.za>

