

## PEES Power Systems

# Can photovoltaic panels be built on the roof of a residential area



## Overview

---

Solar panels can be installed on almost any type of roof—as long as there's access to sunlight. Whether your home has asphalt shingles, tile, wood, or metal roofing, solar is a smart and sustainable home upgrade. Since the 2016 edition of NFPA 1, access pathways have been required on roofs to facilitate fire service access as well as egress. Solar PV now has a solid footing in the residential market, and the building codes have caught up—here's what you need to know. What Types of Roofs Can Solar Panels be Installed On?

Short answer: most of them!. Building-integrated photovoltaics (BIPV) provide a solution by combining waterproofing and energy generation within solar-integrated roofing. By embedding solar technology into shingles or tiles, BIPV eliminates many drawbacks of traditional systems. For photovoltaic arrays occupying more than 33 percent of the plan view total roof area, not less than a 36-inch clear. When we talk about solar panel roofs, we usually picture traditional solar panels mounted on the roof, capturing sunlight through photovoltaic cells and converting it into electricity. However, there's also another option: solar roof tiles also called solar shingles.

## Can photovoltaic panels be built on the roof of a residential area

---



### The Complete Guide To Rooftop Solar Mounting [2025]

Solar panels can't be put on a roof without first having mounting brackets installed. The solar panels are shielded from the elements by the mounting and solar racking system, which can ...

---

### Can Solar Panels be Installed on Any Type of Roof? , SunPower®

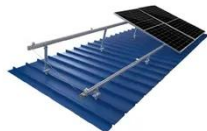
Solar panels can be installed on almost any type of roof--as long as there's access to sunlight. Whether your home has asphalt shingles, tile, wood, or metal roofing, solar is a smart and ...



TILE ROOF SOLAR MOUNTING SYSTEM



STANDING SEAM ROOF SYSTEM



ADJUSTABLE TILT FLAT ROOF SYSTEM



TRIANGLE FLAT ROOF SYSTEM

---

### Rules for Rooftop Solar

Placing PV panels on residential roofs is a balancing act between getting ...



## How To Mount Solar Panels To The Roof: Complete 2025 Guide

Learn how to safely mount solar panels to your roof with our step-by-step guide. Covers all roof types, tools needed, safety tips, and when to hire professionals.



## Rules for Rooftop Solar

Placing PV panels on residential roofs is a balancing act between getting the most possible wattage and creating safe pathways for first responders who may have to climb the roof in an emergency.

## Everything You Need to Know About Solar Panel ...

How to install solar panels on roof and here's a comprehensive guide about everything need to know before installing solar panels on roof.



## Installing solar panels on different roof types

If you're considering installing a residential or commercial solar panel system, you might wonder if your roof



type is appropriate for a solar installation. The good news is that solar panels can ...

---

## Integrating Solar Power into Roofing: BIPV and the Future of

Traditionally, rooftop solar has been installed by electricians and solar installers. The shift to BIPV will necessitate adding roofers as a trade not just allowed but required to install solar-integrated ...



---

## Residential Solar Panel Requirements

NFPA 1 provides guidance on how solar photovoltaic panels must be installed on the roofs of homes.

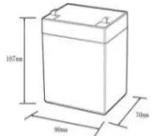

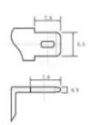
---

## Solar Roof Installation: A Complete Guide for Homeowners

Discover how to install rooftop solar panels, estimate costs, and maximize your home energy savings with our complete homeowner's guide.



**12.BV6Ah**

- Nominal voltage (V):12.8
- Nominal capacity (Ah):6
- Rated energy (Wh):76.8
- Maximum charging voltage (V):14.6
- Maximum charging current (A):6
- Floating charge voltage (V):13.6~13.8
- Maximum continuous discharge current (A):10
- Maximum peak discharge current @10 seconds (A):20
- Maximum load power (W):100
- Discharge cut-off voltage (V):10.8
- Charging temperature (°C):0~+50
- Discharge temperature (°C):-20~+60
- Working humidity: <95% R.H (non condensing)
- Number of cycles (25 °C, 0.5C, 100%doD): >2000
- Cell combination mode: 32700-4s1p
- Terminal specification: T2 (6.3mm)
- Protection grade: IP65
- Overall dimension (mm):50\*70\*107mm
- Reference weight (kg):0.7
- Certification: un38.3/msds

## Photovoltaic Tip Sheet

Rooftop-mounted PV systems shall comply with IRC Section R324.4. The PV panel system shall be designed for wind speed and be installed per the manufacturer's specifications. The ground snow ...

## Contact Us

For catalog requests, pricing, or partnerships, please visit:  
<https://www.peregrine-energy.co.za>

