

PEES Power Systems

Battery discharge current of communication base station



Overview

They ensure uninterrupted connectivity during grid failures by storing energy and discharging it when needed. These batteries support critical communication infrastructure, prioritizing reliability and scalability. EverExceed's advanced LiFePO₄ battery solutions are designed to fully meet these demanding technical requirements, ensuring reliable power supply for 5G networks under diverse operating conditions. The required battery capacity for a 5G base station is not fixed; it depends mainly on station power. In modern power infrastructure discussions, communication batteries primarily refer to battery systems that ensure uninterrupted power in telecom base stations and network facilities, rather than consumer or handheld communication devices. A 12V 30Ah LiFePO₄ battery has a nominal voltage of 12V and a capacity of 30 ampere - hours (Ah). The two sets of 200Ah alkaline batteries configured by the original base station are unreasonable due to the maintenance. Abstract: Cellular base stations (BSs) are equipped with backup batteries to obtain the uninterruptible power supply (UPS) and maintain the power supply reliability.

Battery discharge current of communication base station



Mobile communication base station alkaline battery small current ...

For the small-current discharge of alkaline batteries in mobile communication base stations, the Mapo base station in Yuzhong area of Lanzhou suburbs is taken as an example.

Battery discharge current limit for communication base stations

In the communication power supply field, base station interruptions may occur due to sudden natural disasters or unstable power supplies. This work studies the optimization of



PUSUNG-R (Fit for 19 inch cabinet)

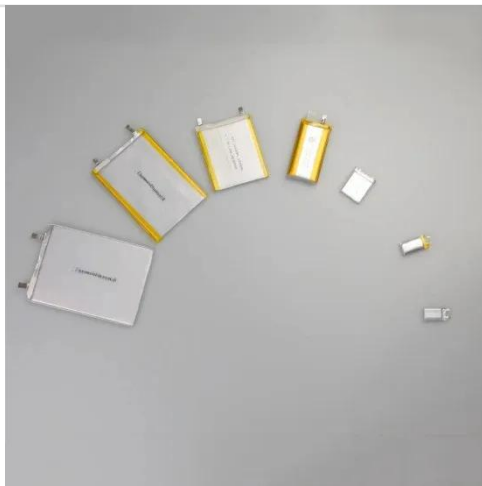


What Powers Telecom Base Stations During Outages?

Telecom batteries for base stations are backup power systems using valve-regulated lead-acid (VRLA) or lithium-ion batteries. They ensure uninterrupted connectivity during grid failures ...

Understanding Backup Battery Requirements for Telecom Base Stations

Telecom base stations require reliable backup power to ensure uninterrupted communication services. Selecting the right backup battery is crucial for network stability and efficiency.

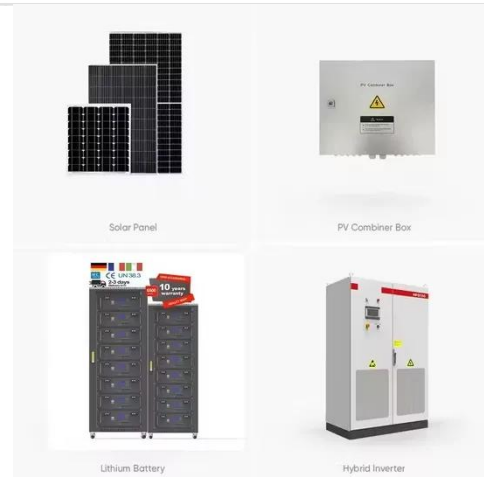


LI-ION BATTERY SOLUTION FOR TELECOM BASE STATION

SPECIAL FEATURES Fully replaceable with current batteries (Lead-Acid, Ni-Cd)
Automatic voltage balancing between trays
Batteries can use existing rectifier by only adjusting some values (Voltage ...

Communication Batteries: Why Telecom Base Stations Have Unique ...

The phrase "communication batteries" is often applied broadly, sometimes including handheld radios, emergency devices, or general-purpose backup batteries. In practice, when ...



5G Base Station Lithium Battery: Capacity and Discharge Rate ...



EverExceed's high-rate discharge LiFePO₄ batteries are engineered to handle these demanding conditions, ensuring stable and efficient power delivery to 5G infrastructure.

(PDF) Performance Analysis of VRLA Battery for DC Load at

The high level of power outage in Sukabumi-Cianjur area has influenced the operations of telecommunication industry in the vicinity. This has shortened the battery life at the Base Station



Base station lead-acid battery charge and discharge times

In one experiment, when the discharge time of a & It;5-year-old lead-acid battery used for engine starting had degraded to about 50% of its initial discharge capacity, the authors found that 80% of the initial ...

Can a 12V 30Ah LiFePO₄ battery be used in a communication base ...

It is important to note that the battery management system (BMS) in the communication base station needs to be compatible with LiFePO4 batteries. The BMS is responsible for monitoring and ...



Contact Us

For catalog requests, pricing, or partnerships, please visit:
<https://www.peregrine-energy.co.za>

