

PEES Power Systems

Base station system communication principle



Overview

A base station's operation can be summarized in three steps: wireless transmission, signal conversion, and network connection. First, the base station uses its tall antennas to transmit and receive electromagnetic waves, which we commonly call "mobile phone signals. They are referred to as cell towers or cellular antennas. These types of objects are an inevitability since they serve the purpose of. Base station (or base radio station, BS) is - according to the International Telecommunication Union 's (ITU) Radio Regulations (RR) [1] - a " land station in the land mobile service. It acts as a bridge, connecting your phone to a vast communication network to ensure smooth information flow.

Base station system communication principle

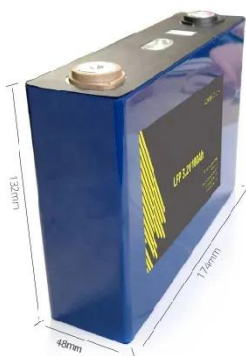
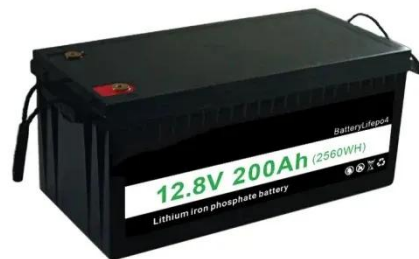


Base Stations

Base stations form a key part of modern wireless communication networks because they offer some crucial advantages, such as wide coverage, continuous communications and an array of ...

What is a Base Station? -- From Communication Core to Thermal ...

Base stations are the core of mobile communication, and with the rise of 5G, thermal and energy challenges are increasing. This article explains the definition, structure, types, and principles ...



The Base Station in Wireless Communications: The Key to Modern

Equipped with an electromagnetic wave antenna, often placed on a tall mast, the base station enables communication between mobile terminals (such as mobile phones or pagers) and the ...

What Is a Base Station? Definition and How It Works

The base station acts as a converter, taking radio waves from a mobile phone and transforming them into a digital format that can be routed across the wider network, often using fiber ...



Base station

Overview
Computer networking
Land surveying
Wireless communications
See also

In the area of wireless computer networking, a base station is a radio receiver/transmitter that serves as the hub of the local wireless network, and may also be the gateway between a wired network and the wireless network. It typically consists of a low-power transmitter and wireless router.

Base Station System Structure

The intent of this section is to explore the role of base stations in communications systems, and to develop a reference model that can be used to describe and compare base station software ...



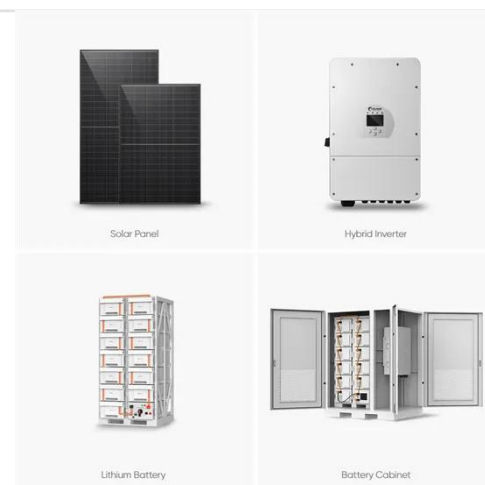
Understanding Base Stations in Mobile Communication



In summary, base stations play a multifaceted role in mobile communication by ensuring effective signal transmission and reception, executing seamless handoff procedures, and maintaining network ...

Base station communication principle

Equipped with an electromagnetic wave antenna, often placed on a tall mast, the base station enables communication between mobile terminals (such as mobile phones or pagers) and the fixed part of ...



Understanding Base Stations: The Backbone of Wireless ...

In cellular networks, a base station typically consists of antennas, a transmitter/receiver system, and a base station controller (BSC). The base station is responsible for maintaining ...

What are Base Station in Telecommunications?

Base stations contain several key parts. The antenna sends and receives radio

energy. The transceiver handles signal modulation. The baseband processor converts signals to digital form. ...



Contact Us

For catalog requests, pricing, or partnerships, please visit:
<https://www.peregrine-energy.co.za>

