

PEES Power Systems

Base station maintenance battery replacement process

LIQUID COOLING ENERGY STORAGE SYSTEM

EMS real-time monitoring
No container design
flexible site layout



Cycle Life
≥8000

Nominal Energy
200kwh

IP Grade
IP55



Overview

This guide walks you through every step of safely removing and installing a new battery in your SimpliSafe base station, using only basic tools and clear instructions. SimpliSafe systems include a rechargeable lithium-ion backup battery designed to keep your alarm. In this guide, we break down the essential role of substation battery systems, best practices for installation, the importance of regular maintenance, and what to watch for to avoid preventable failures. Battery systems in substations typically supply direct current (DC) to power critical systems. At the following section you will find instructions on how to replace the internal batteries of the GNSS BASE Station easily. Two valve regulated sealed lead acid type rechargeable battery. Shut down the GNSS Base Station.

Base station maintenance battery replacement process

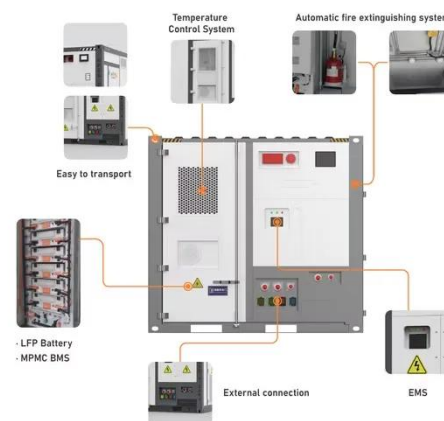


Communication Batteries: Why Telecom Base Stations Have Unique ...

In modern power infrastructure discussions, communication batteries primarily refer to battery systems that ensure uninterrupted power in telecom base stations and network facilities, ...

TELECOMMUNICATIONS- VRLA BATTERY MAINTENANCE, ...

Embracing these methods and procedures allows the user to obtain maintenance and test data indicating the current battery system condition and predictions for remaining battery service life. The ...



Battery Replacement

Step 4 After keeping all parts well aside, remove the plugs from the batteries. In the next step also remove the upper metal plate of the battery holder. Now you can replace the battery's.

Battery replacement guidelines scope of work (SOW R-11)

Perform cleaning of all accessible surfaces as required. The technician(s) will issue the customer a verbal report summarizing the work that was performed, condition of the battery and identifying any ...



How to Maintain Backup Power Supply for Telecommunications Base ...

Maintaining backup power supply for telecommunications base stations is crucial to ensure uninterrupted communication services, especially during power outages or emergencies. Here are ...

Powering Up Safely: The Ins and Outs of Substation Battery ...

Learn best practices for substation battery installation and maintenance. Discover how reliable battery systems support substation protection and avoid costly outages.



Step By Step Guide To Safely Removing And Replacing Your

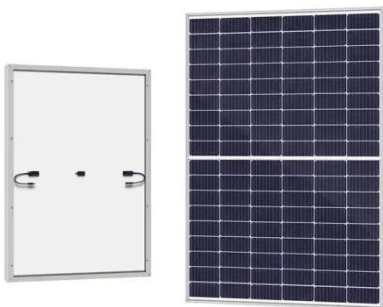


...

This guide walks you through every step of safely removing and installing a new battery in your SimpliSafe base station, using only basic tools and clear instructions.

Battery maintenance and testing guide

To prevent plates from touching each other and shorting the ...



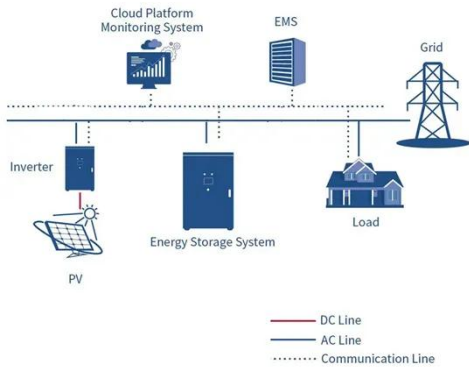
Battery maintenance and testing guide

To prevent plates from touching each other and shorting the battery, there is a separator between each of the plates. Figure 1 is a diagram of a four-post battery from the top looking through ...

Selection and maintenance of battery for communication base station

Focused on the engineering applications of batteries in the communication

stations, this paper introduces the selections, installations and maintenances of batteries for communication stations, ...



Base Station Battery Failure , SimpliSafe Support Home

Your Base Station comes pre-installed with four (4) NiMH (nickel-metal hydride) rechargeable batteries, which are kept charged by your Base Stations. These batteries should never be replaced with ...

Contact Us

For catalog requests, pricing, or partnerships, please visit:
<https://www.peregrine-energy.co.za>

