

PEES Power Systems

Bangladesh 5G communication base station wind power project



Bangladesh 5G communication base station wind power project



Bangladesh communication base station wind power battery

As global energy demands soar and businesses look for sustainable solutions, solar energy is making its way into unexpected places--like communication base stations.

CN111447693A

The sail module and the power generation module are erected on a high-rise signal tower, the conversion efficiency is improved through the built-in speed-increasing gear structure, the windward

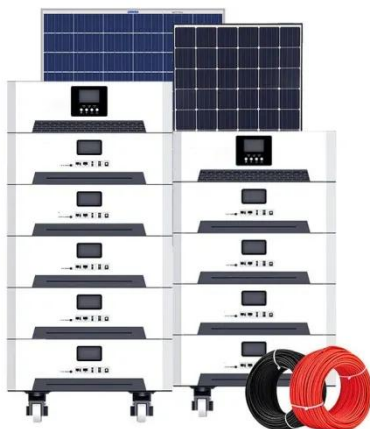


Bangladesh's first large-scale centralized wind farm

As a key project in Bangladesh, this wind farm enriches the country's renewable energy sector. It also represents a significant achievement in energy cooperation between China and Bangladesh under ...

Bangladesh 5G communication base station wind power enterprise

Sep 2, 5G: What it is, how it differs from 4G, and where the world stands
Bangladesh has entered the 5G era with limited commercial switch-ons by Robi Axiata and Grameenphone.



Bangladesh Offshore Wind Development

Bangladesh Advancing Development and Growth through Energy (BADGE): A five-year project started in 2021, with a total \$17.2 million by USAID. The project aims to improve energy security and ...

Research on Offshore Wind Power Communication System Based on ...

In view of the special needs of the communication system, a communication system scheme for offshore wind farms based on 5G technology is proposed.



5G and energy internet planning for power and communication ...

Our study introduces a communications and power coordination planning (CPCP) model that encompasses both distributed energy resources and base stations to improve communication ...



Dhaka communication base station wind power equipment

...

Get reliable Power Sub-Station services in Bangladesh, including installation, maintenance, and upgrades. Our expert team ensures efficient power distribution and safety compliance for



Wind Projects , National Database of Renewable Energy, SREDA

SL.



Wind power construction of communication base stations

We investigate the use of wind turbine-mounted base stations (WTBSs) as a

cost-effective solution for regions with high wind energy potential, since it could replace or even outperform



Contact Us

For catalog requests, pricing, or partnerships, please visit:
<https://www.peregrine-energy.co.za>

