

PEES Power Systems

60 square meters photovoltaic panel installation



Overview

System capacity: A 60-panel setup typically generates 18-24 kW, depending on panel wattage. Labor and permits: Installation fees account for 10-15% of total costs. Location: Roof complexity, local incentives, and sunlight hours impact pricing. Standard Residential Panels Optimize Space and Handling: The industry-standard 60-cell panel dimensions (65" x 39" x 1.5") aren't arbitrary – they represent the optimal balance between power output, installation ease, and roof space utilization. At 40-46 pounds, they can be safely handled by. While the average homeowner installs between 16 and 25 panels nationwide, the size of your system may depend on the following factors: Most home solar panel systems are designed to produce enough annual electricity to meet the property's approximate energy demand. This guide reviews the best practices for solar panel installation, the equipment needed for solar energy systems and how to calculate solar energy. What Determines the Cost of Installing 60 Solar Panels?

Installing 60 photovoltaic panels isn't a one-size-fits-all project. The dimensions of 60-cell solar panels are as follows: 66 inches long, and 39 inches wide. But what is the wattage?

That is unfortunately not listed at all.

60 square meters photovoltaic panel installation

A Pro Guide to Installing Solar Panels



This guide reviews the best practices for solar panel installation, the equipment needed for solar energy systems and how to calculate solar energy installation costs.

How much area is needed for solar panel installation

To help you decide if your property is suitable for solar, this guide outlines roof space requirements and breaks down how to calculate the area needed for your home solar panel installation.



Total Area Required for Solar Panel Installation Calculator

Calculate the total area needed for your solar panel installation quickly and accurately with our easy-to-use solar panel area calculator.



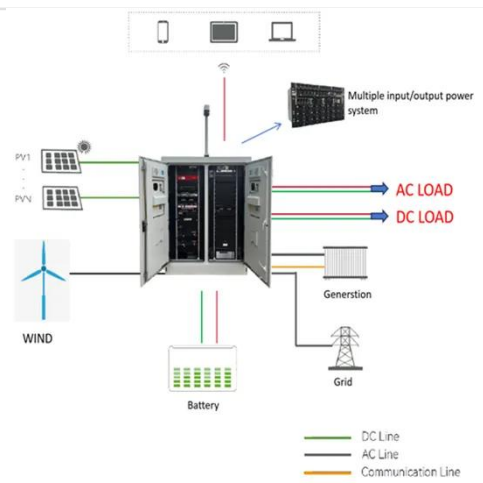
How Much Do Solar Panels

Cost in 2026?

Solar installation costs vary significantly by location due to differences in labor rates, local incentives, permitting fees and electricity prices. The national average is around \$20,000. On



Photo courtesy of [Energy Storage Systems](#)



A Guide on Calculating Area Required for Solar Panel Installation

For installing all the solar panels in one row, approximately 1m x 5.56m of space is essential as each solar panel is 1m x 0.556m in size. The results of the calculation of your solar ...

Solar Panel Size & Dimensions Guide 2025 , Complete Specs

In this comprehensive guide, you'll learn everything you need to know about solar panel sizing, from standard dimensions to weight considerations, helping you determine the perfect solar ...



- IP65/IP55 OUTDOOR CABINET
- ALUMINUM
- OUTDOOR ENERGY STORAGE CABINET
- OUTDOOR MODULE CABINET

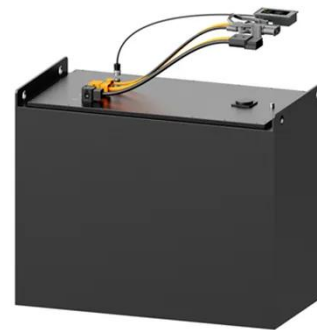
60 Photovoltaic Panels Installation Price: Costs, Savings, and Key



Wondering how much it costs to install 60 solar panels? You're not alone. With rising energy prices and growing environmental awareness, solar power has become a hot topic. This guide breaks down ...

Standard Solar Panel Sizes And Wattages (100W-500W Dimensions)

As we can see, those 60-cell, 72-cell, and 96-cell solar panel dimensions are a bit theoretical. These are the practical solar panel dimensions by wattage from solar panels that are actually sold on the ...



standard solar photovoltaic panel sizes explained

Discover standard solar photovoltaic panel sizes. Choose the perfect fit for your installation with our expert guide. Learn more today!

Contact Us

For catalog requests, pricing, or partnerships, please visit:

<https://www.peregrine-energy.co.za>

